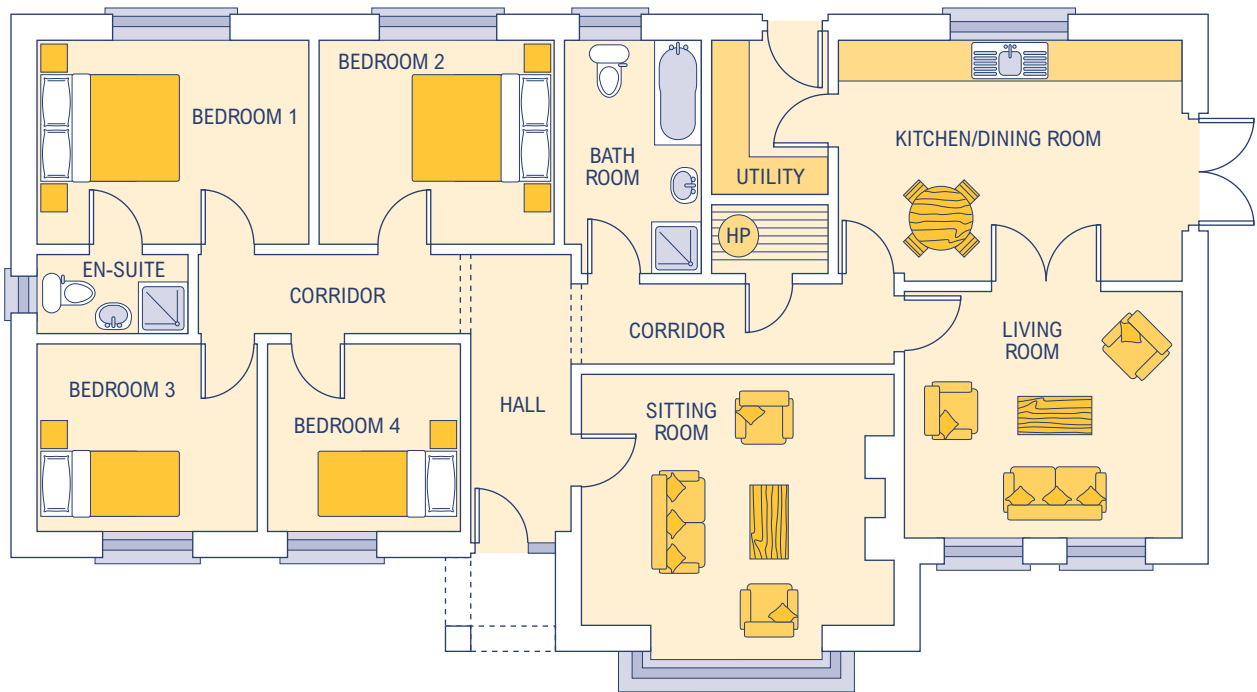


# ANNAGHMORE



## Dimensions\*

Internal floor area 145.28 sq. m.  
(1563.77 sq. feet)  
External frontage 18.275m

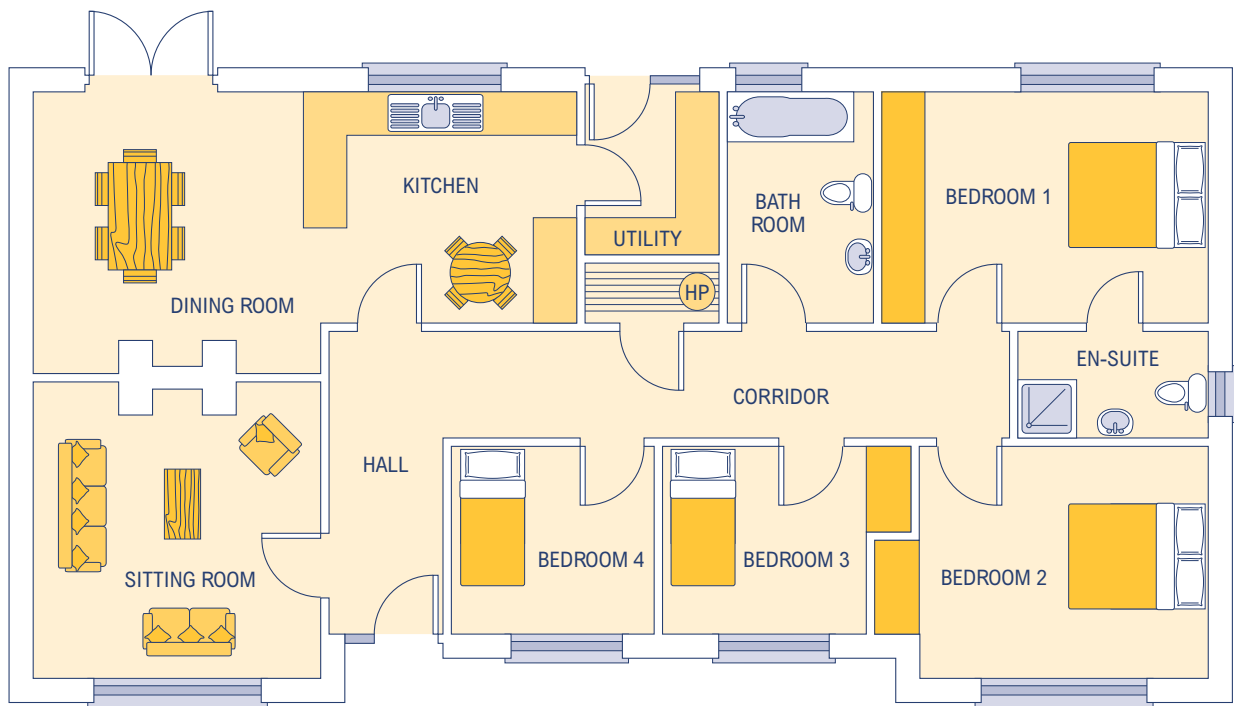
No part of this document to be reproduced in whole or in part without prior written permission from Finlay Build Ltd.

\* Approximate / nominal dimensions  
Measurements exclude recesses for wardrobes

Kitchen/Dining Room	5385 x 3760
Living Room	4370 x 3760
Sitting Room	4875 x 3965
Utility	1830 x 2440
Hall	1525 wide
Bathroom	2135 x 3645

Bedroom 1	4265 x 3185
Bedroom 2	3660 x 3185
Bedroom 3	3455 x 2985
Bedroom 4	3050 x 2985
En-suite	2440 x 1250

# ASHFIELD



## Dimensions\*

Internal floor area 125.61 sq. m.  
(1352.05 sq. feet)  
External frontage 16.450m

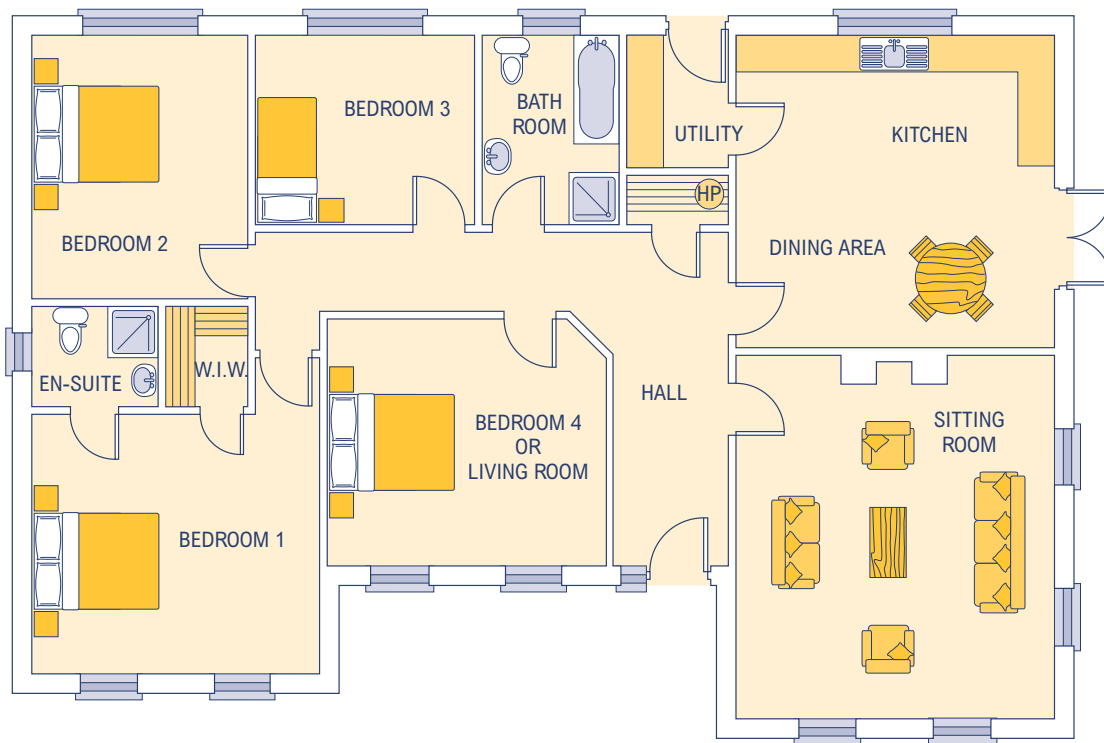
No part of this document to be reproduced in whole or in part without prior written permission from Finlay Build Ltd.

\* Approximate / nominal dimensions  
Measurements exclude recesses for wardrobes

Kitchen/Dining Room	7320 x 3810
Sitting Room	3910 x 4015
Utility	1830 x 2222
Hall	1525 wide
Bathroom	1980 x 3138

Bedroom 1	4420 x 3138
Bedroom 2	3910 x 3338
Bedroom 3	2745 x 2728
Bedroom 4	2745 x 2728
En-suite	2590 x 1250

# BARNA



## Dimensions\*

Internal floor area 152.45 sq. m.  
(1640.95 sq. feet)  
External frontage 16.600m

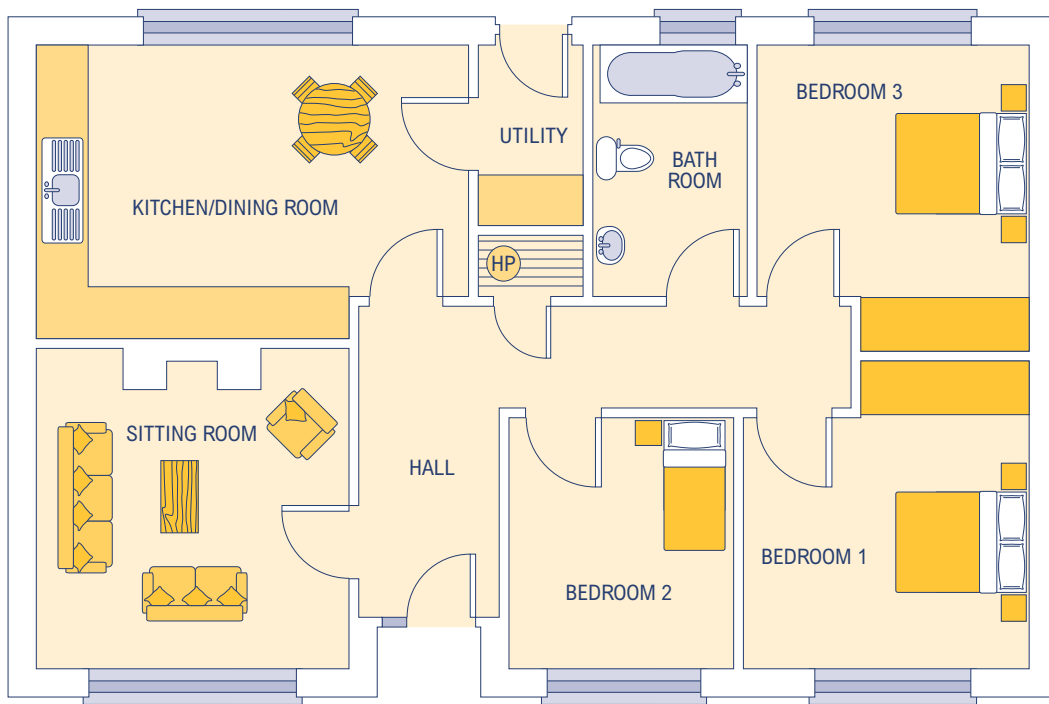
No part of this document to be reproduced in whole or in part without prior written permission from Finlay Build Ltd.

\* Approximate / nominal dimensions  
Measurements exclude recesses for wardrobes

Kitchen/Dining Room	5000 x 4900
Living Room/Bedroom 4	4400 x 3875
Sitting Room	5000 x 5700
Utility	1600 x 2075
Hall	1800 wide
Bathroom	2150 x 2975

Bedroom 1	4500 x 4075
Bedroom 2	3400 x 4150
Bedroom 3	3450 x 2975
En-suite	2000 x 1575

# BRACKLIN



## Dimensions\*

Internal floor area 84.70 sq. m.  
(911.78 sq. feet)  
External frontage 12.180m

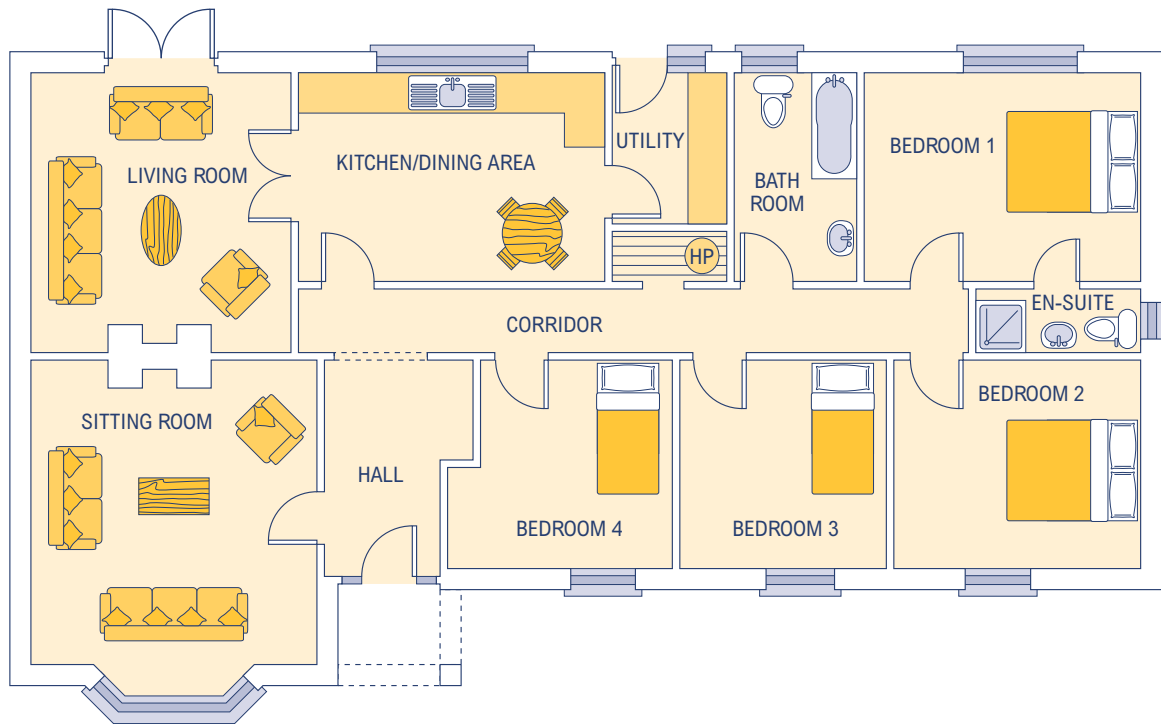
No part of this document to be reproduced in whole or in part without prior written permission from Finlay Build Ltd.

\* Approximate / nominal dimensions  
Measurements exclude recesses for wardrobes

Kitchen/Dining Room	5030 x 3455
Sitting Room	3660 x 3760
Utility	1220 x 2135
Hall	1625 wide
Bathroom	1830 x 2950

Bedroom 1	3350 x 2915
Bedroom 2	2645 x 2915
Bedroom 3	3200 x 2950

# CARRIG



## Dimensions\*

Internal floor area 150.98 sq. m.  
(1625 sq. feet)  
External frontage 18.27m

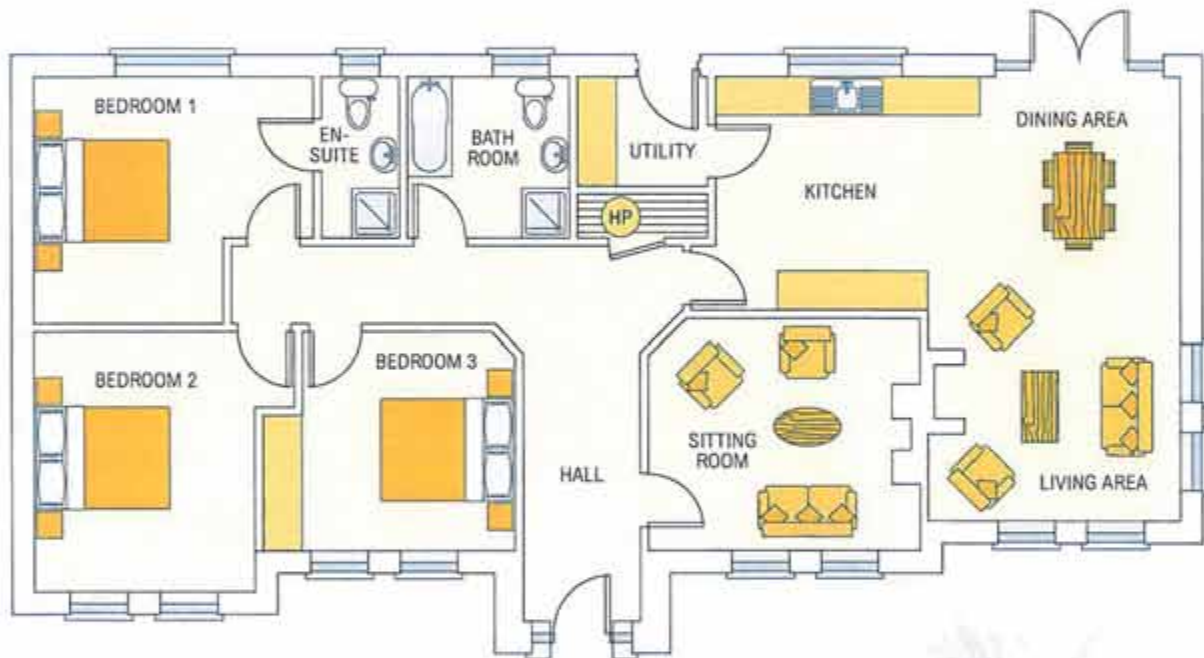
No part of this document to be reproduced in whole or in part without prior written permission from Finlay Build Ltd.

\* Approximate / nominal dimensions  
Measurements exclude recesses for wardrobes

Kitchen/Dining Room	4875 x 3355
Living Room	4165 x 4705
Sitting Room	4570 x 4640
Utility	1830 x 2440
Hall	1830 wide
Bathroom	1980 x 3355

Bedroom 1	4420 x 3355
Bedroom 2	3965 x 3120
Bedroom 3	3300 x 3120
Bedroom 4	3605 x 3120
En-suite	2640 x 1250

# CASTLETOWN



## Dimensions\*

Internal floor area 136.28 sq. m.  
(1466.9 sq. feet)  
External frontage 18.62m

No part of this document to be reproduced in whole or in part without prior written permission from Finlay Build Ltd.

\* Approximate / nominal dimensions  
Measurements exclude recesses for wardrobes

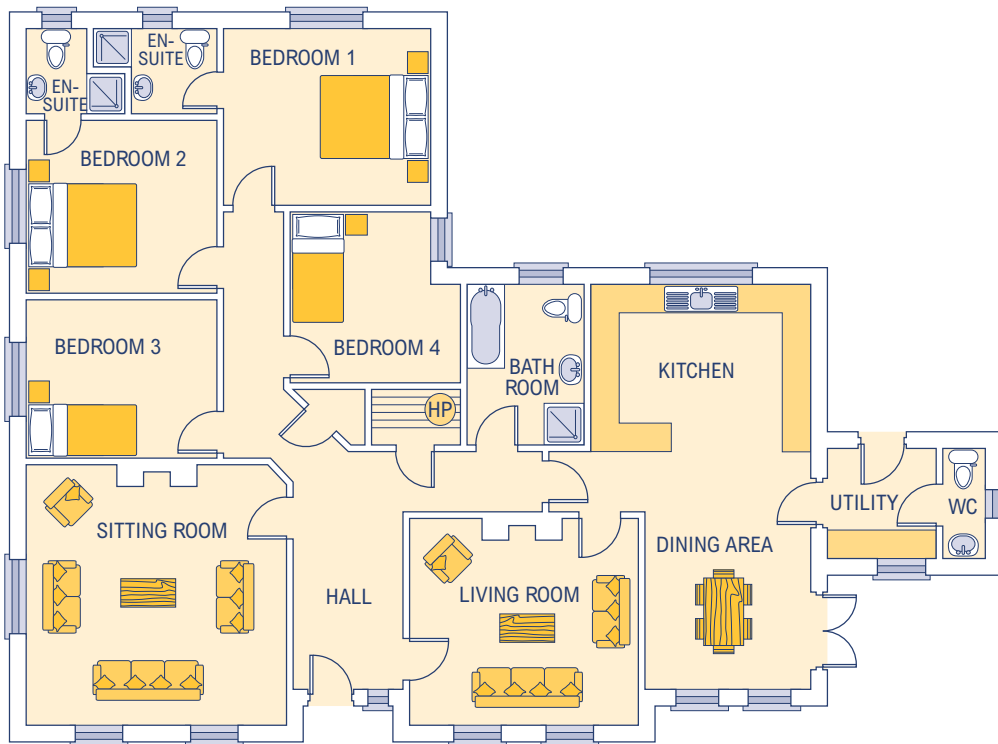
Kitchen/Dining Area	7305 x 3700
Dining/Living Area	7000 x 4000
Sitting Room	4270 x 3650
Utility	2050 x
Hall	1830 wide

Bedroom 1	4385 x 3900
En-suite	1250 x 2550
Bedroom 2	3450 x 4100
Bedroom 3	3385 x 3450
Bathroom	2580 x 2550

# CASTLETOWN



# CLONEARL



## Dimensions\*

Internal floor area 194.31 sq. m.  
(2092 sq. feet)  
External frontage 20.295m

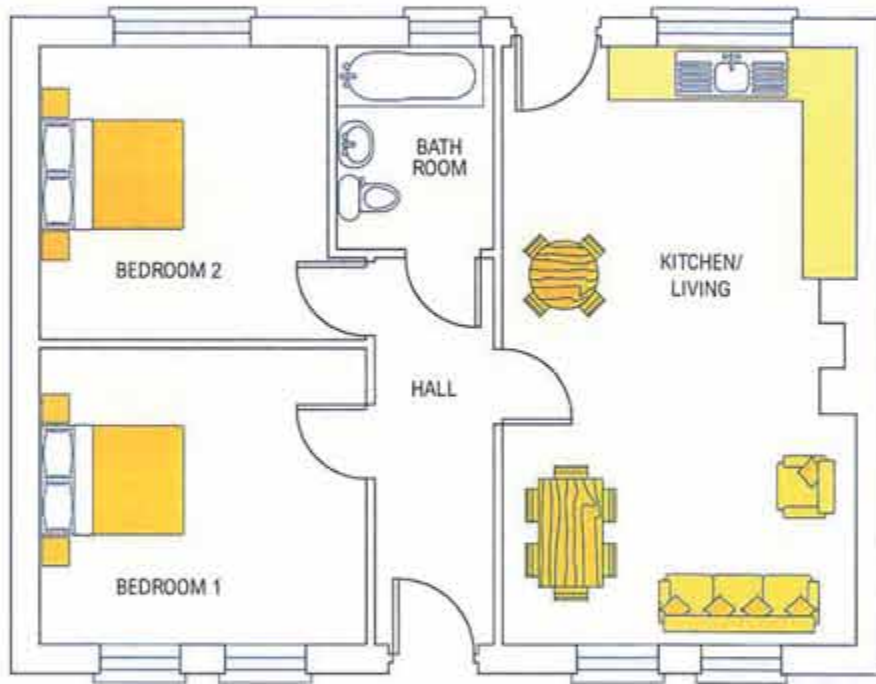
No part of this document to be reproduced in whole or in part without prior written permission from Finlay Build Ltd.

\* Approximate / nominal dimensions  
Measurements exclude recesses for wardrobes

Kitchen/Dining Room	4578 x 8327	Bedroom 1	4267 x 3567
Living Room	4700 x 4300	Bedroom 2	3960 x 3580
Sitting Room	5385 x 5385	Bedroom 3	3960 x 3280
Utility	2300 x 2250	Bedroom 4	3517 x 3667
Hall	2280 wide	En-suite 1	2180 x 1800
Bathroom	2440 x 3427	En-suite 2	1680 x 1800

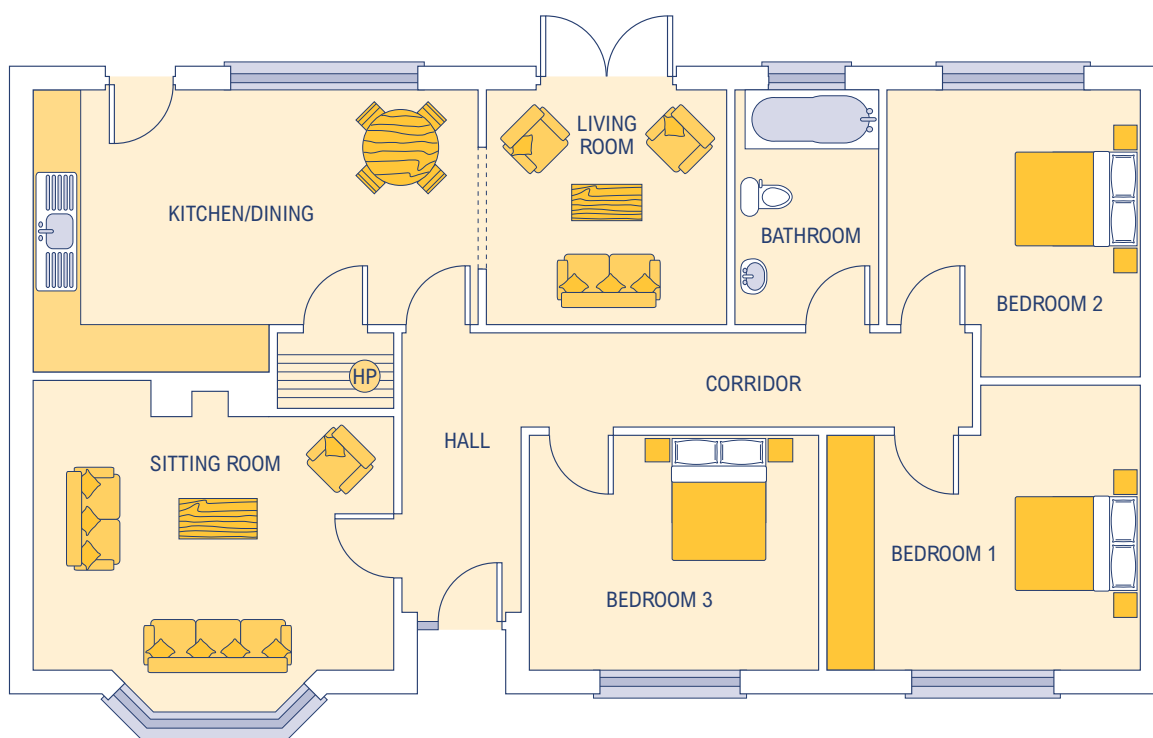


# COOLFIN



Dimensions*			
Internal floor area 61.28 sq. m. (660 sq. feet) External frontage 9.79m		No part of this document to be reproduced in whole or in part without prior written permission from Finlay Build Ltd.	
		* Approximate / nominal dimensions Measurements exclude recesses for wardrobes	
Kitchen/Living Room	3965 x 6705	Bedroom 1	3655 x 3303
Hall	1320 x 4320	Bedroom 2	3225 x 3302
Bathroom	1750 x 2285		

# CURRAGH



## Dimensions\*

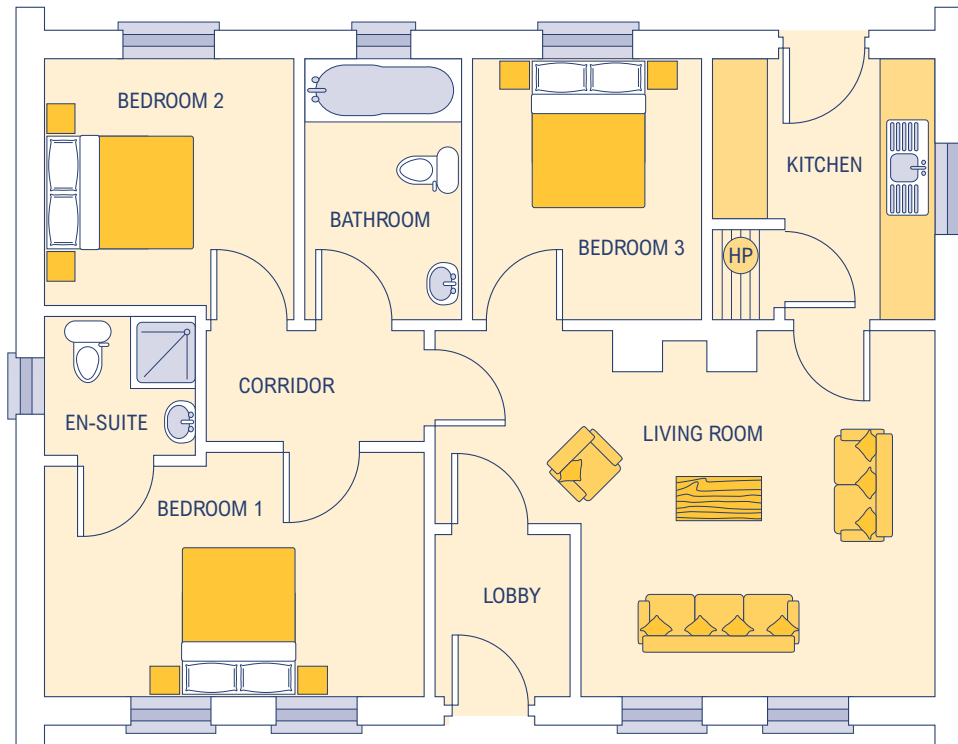
Internal floor area 103.58 sq. m.  
(1114.92 sq. feet)  
External frontage 14.615m

No part of this document to be reproduced in whole or in part without prior written permission from Finlay Build Ltd.

\* Approximate / nominal dimensions  
Measurements exclude recesses for wardrobes

Kitchen/Dining Room	5640 x 3555
Sitting Room	4570 x 3660
Living Room	3050 x 2965
Hall	1525 wide
Bathroom	1830 x 2965

Bedroom 1	3960 x 2900
Bedroom 2	3195 x 2965
Bedroom 3	3660 x 2900



### Dimensions\*

Internal floor area 68.38 sq. m.  
(736 sq. feet)  
External frontage 10.35m

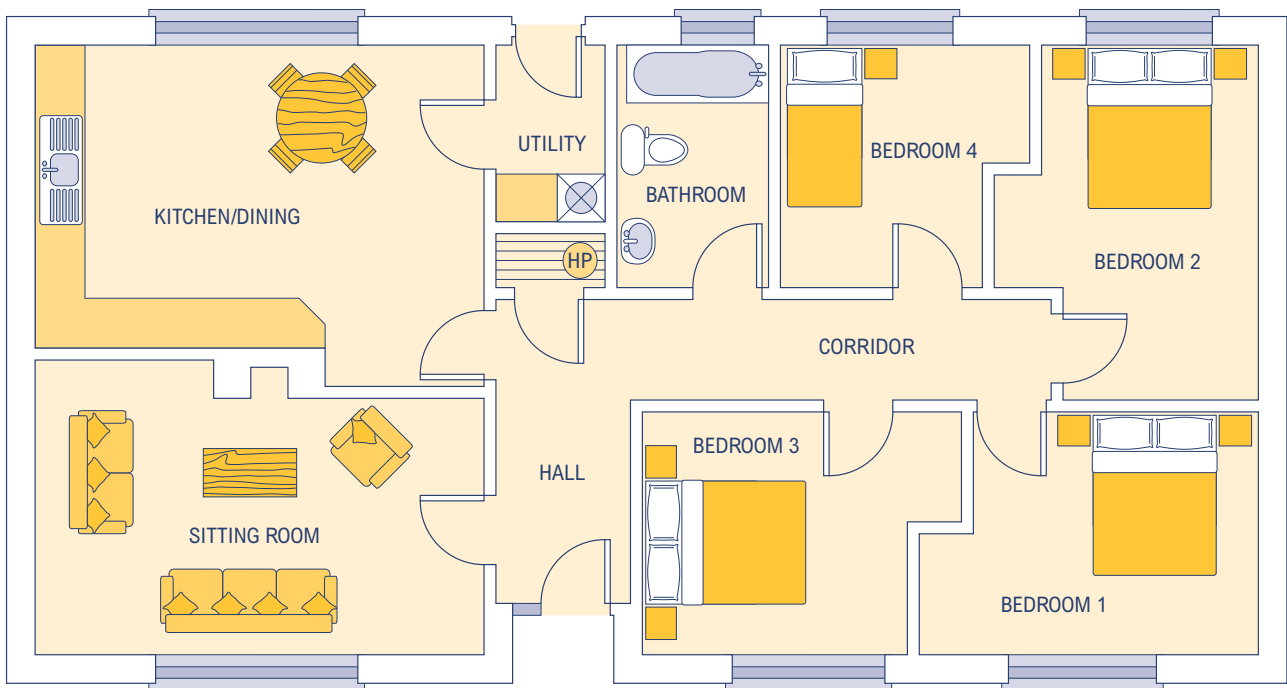
No part of this document to be reproduced in whole or in part without prior written permission from Finlay Build Ltd.

\* Approximate / nominal dimensions  
Measurements exclude recesses for wardrobes

Living Area	5486 x 4035
Utility	2440 x 2750
Lobby	1500 x 1800
Bathroom	1750 x 2875

Bedroom 1	4169 x 2685
Bedroom 2	2745 x 2875
Bedroom 3	2520 x 2875
En-suite	1675 x 1525

# DURROW



## Dimensions\*

Internal floor area 107.09 sq. m.  
(1152.70 sq. feet)  
External frontage 15.240m

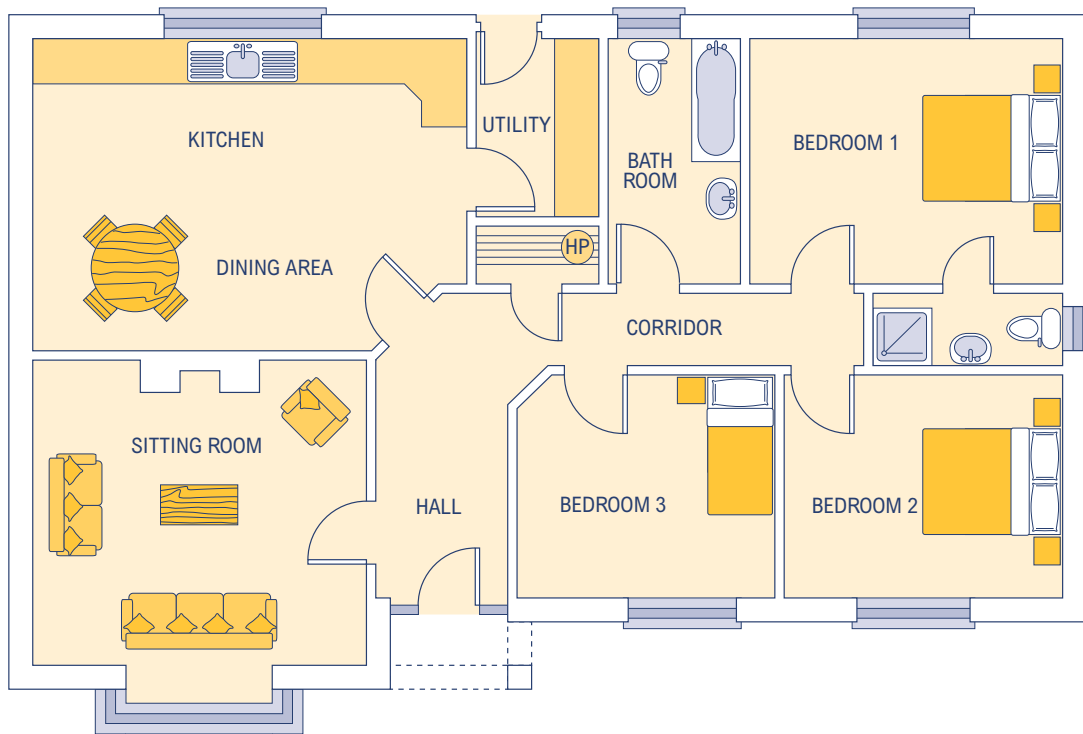
No part of this document to be reproduced in whole or in part without prior written permission from Finlay Build Ltd.

\* Approximate / nominal dimensions  
Measurements exclude recesses for wardrobes

Kitchen/Dining Room	5385 x 3665
Sitting Room	5385 x 3550
Utility	1370 x 2150
Hall	1675 wide
Bathroom	1830 x 2950

Bedroom 1	3455 x 2915
Bedroom 2	2640 x 4300
Bedroom 3	3200 x 2915
Bedroom 4	2440 x 2950

# GLENVIEW



## Dimensions\*

Internal floor area 113.74 sq. m.  
(1224 sq. feet)  
External frontage 14.615m

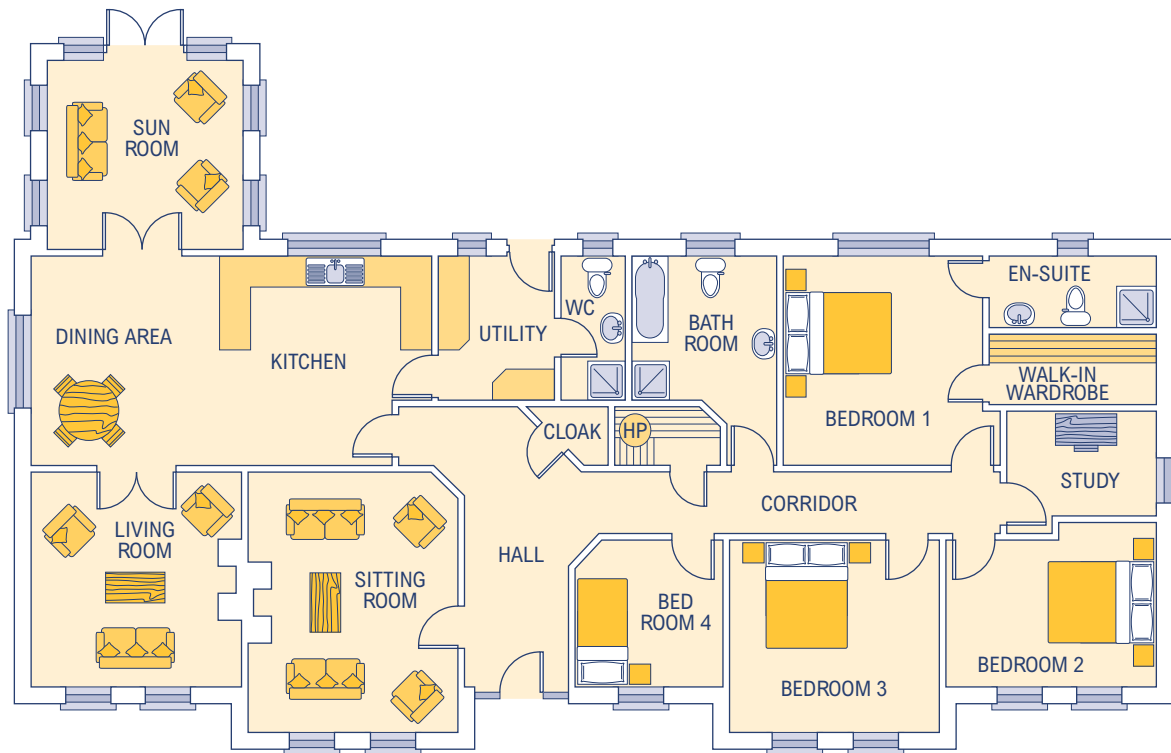
No part of this document to be reproduced in whole or in part without prior written permission from Finlay Build Ltd.

\* Approximate / nominal dimensions  
Measurements exclude recesses for wardrobes

Kitchen/Dining Room	5945 x 4265
Sitting Room	4570 x 4165
Utility	1675 x 2440
Hall	1830 wide
Bathroom	1830 x 3355

Bedroom 1	4265 x 3355
Bedroom 2	3810 x 2815
Bedroom 3	3505 x 2815
En-suite	2590 x 1250

# KILLURIN



## Dimensions\*

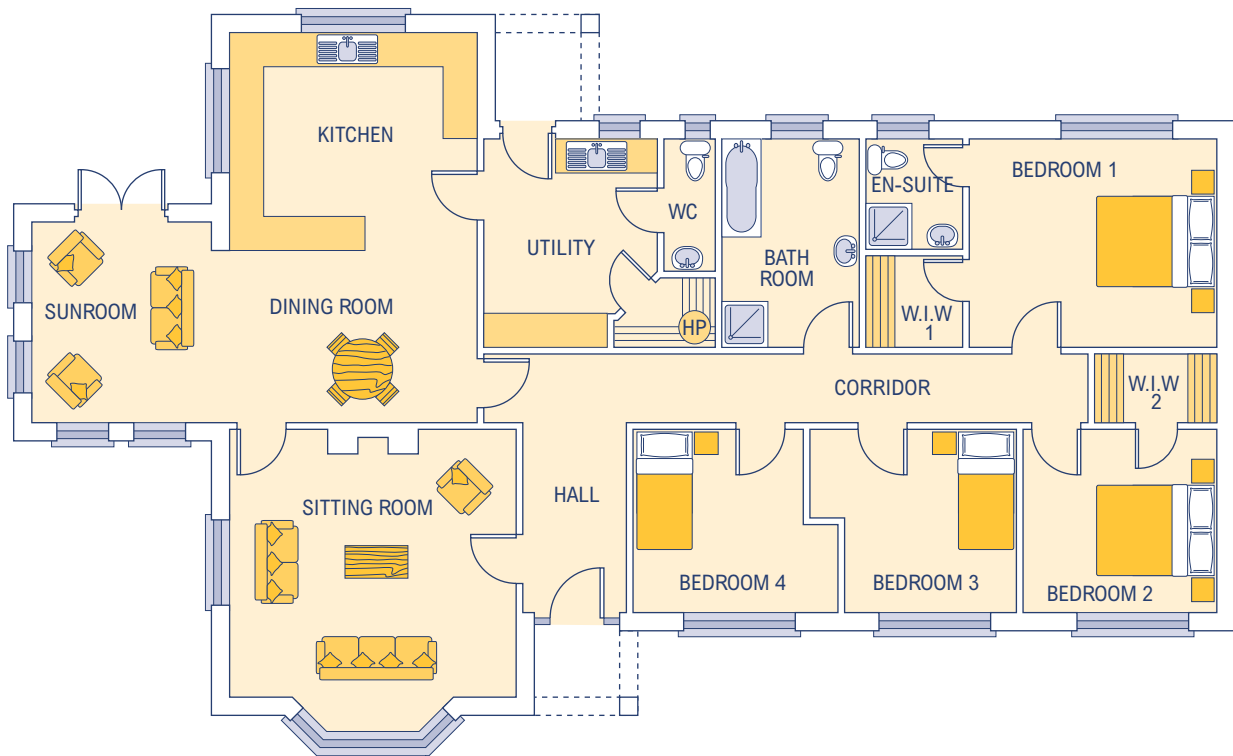
Internal floor area 215.91 sq. m.  
(2324 sq. feet)  
External frontage 23.010m

No part of this document to be reproduced in whole or in part without prior written permission from Finlay Build Ltd.

\* Approximate / nominal dimensions  
Measurements exclude recesses for wardrobes

Kitchen/Dining Room	8000 x 4200	Shower Room	1284 x 2900
Living Room	4200 x 4310	Bedroom 1	4000 x 4200
Sitting Room	4200 x 5210	Bedroom 2	4210 x 3304
Utility	2350 x 2900	Bedroom 3	4200 x 3860
Hall	2100 wide	Bedroom 4	3000 x 2960
Bathroom	2919 x 2900	En-suite	3357 x 1453
Sun Room	3960 x 3805	Study	3000 x 2100

# KINCORA



## Dimensions\*

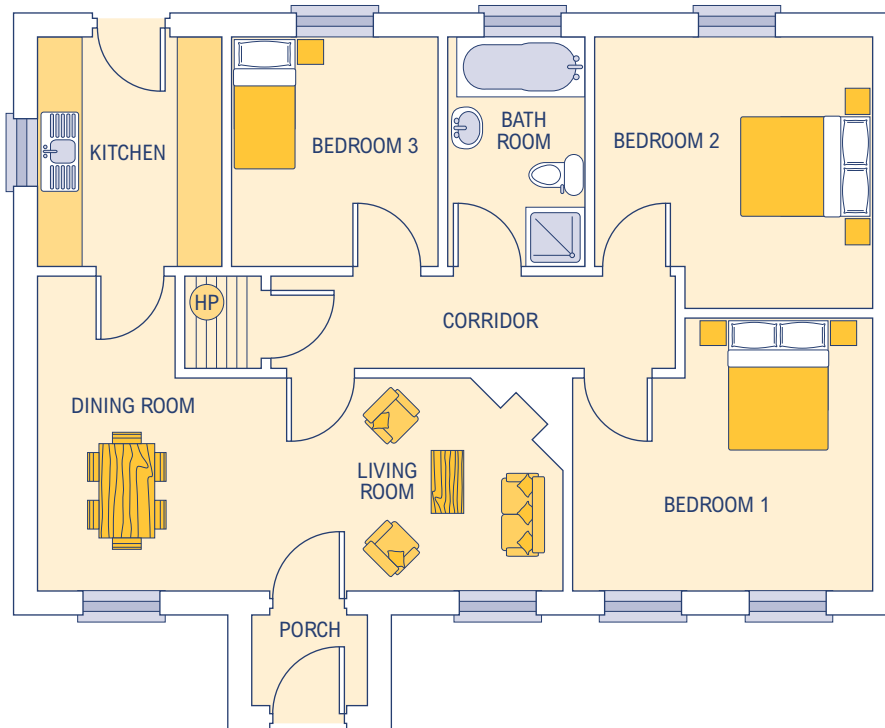
Internal floor area 176.83 sq. m.  
(1903 sq. feet)  
External frontage 21.265m

No part of this document to be reproduced in whole or in part without prior written permission from Finlay Build Ltd.

\* Approximate / nominal dimensions  
Measurements exclude recesses for wardrobes

Kitchen/Dining Room	4300 x 6800	Bedroom 1	4325 x 3650
Sitting Room	5000 x 4700	Bedroom 2	3400 x 3200
Utility	2850 x 3650	Bedroom 3	3000 x 3200
Hall	1800 wide	Bedroom 4	3000 x 3200
Bathroom	2425 x 3650	En-suite	1700 x 1925
Sun Room	3165 x 3500	WC	900 x 2325

# KYLEMORE



## Dimensions\*

Internal floor area 82.56 sq. m.  
(886.66 sq. feet)  
External frontage 11.570m

No part of this document to be reproduced in whole or in part without prior written permission from Finlay Build Ltd.

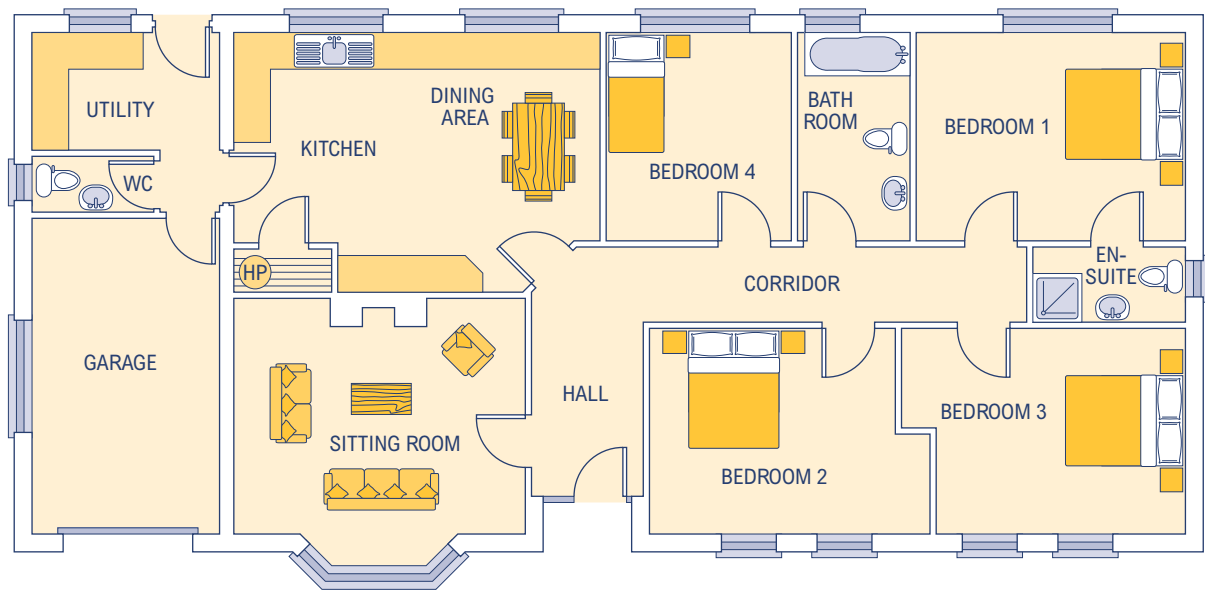
\* Approximate / nominal dimensions  
Measurements exclude recesses for wardrobes

Kitchen	2440 x 3050
Living/Dining Room	6910 x 2815
Porch	1525 x 1220
Bathroom	1830 x 3050

Bedroom 1	3960 x 3607
Bedroom 2	3660 x 3607
Bedroom 3	2740 x 3050



# LAKAN



## Dimensions\*

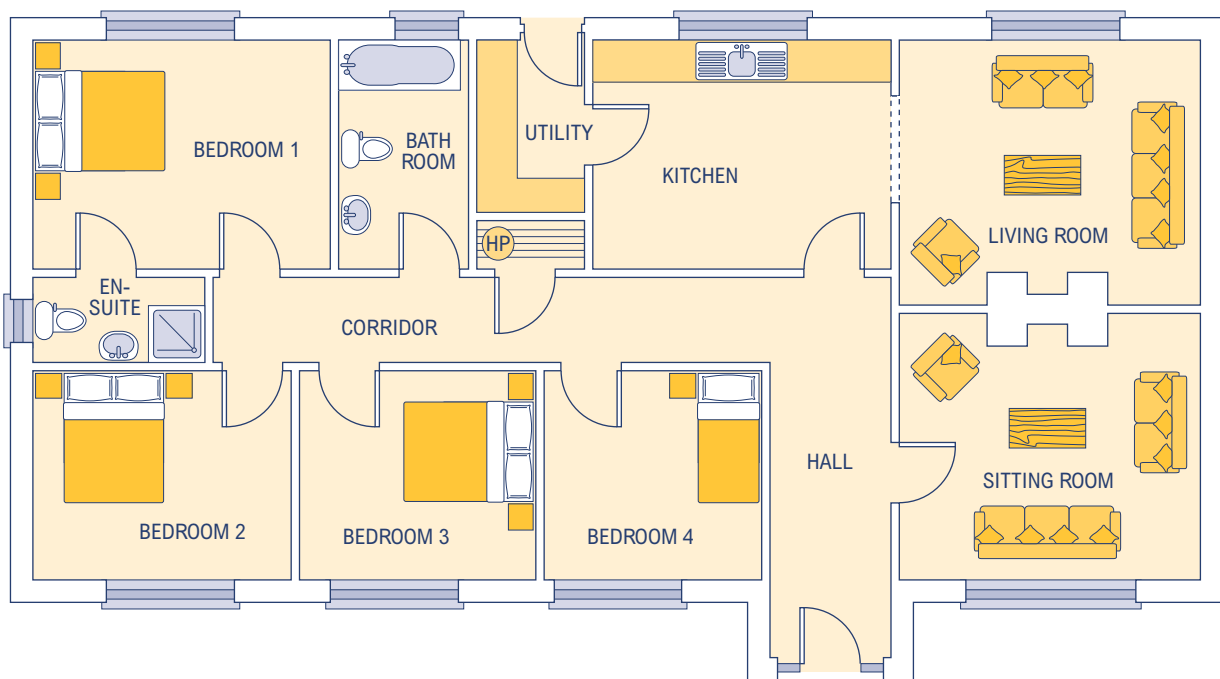
Internal floor area 156.39 sq. m.  
(1683 sq. feet)  
External frontage 19.485m

No part of this document to be reproduced in whole or in part without prior written permission from Finlay Build Ltd.

\* Approximate / nominal dimensions  
Measurements exclude recesses for wardrobes

Kitchen/Dining Room	6020 x 4265	Bedroom 1	4420 x 3415
Sitting Room	4800 x 3860	Bedroom 2	4040 x 3360
Hall	1830 wide	Bedroom 3	4090 x 3360
Bathroom	1830 x 3415	Bedroom 4	3050 x 3415
Utility	3050 x 1930	En-suite	2490 x 1250
WC	1963 x 915	Garage	3050 x 5180

# ROSS



### Dimensions\*

Internal floor area 127.28 sq. m.  
(1370 sq. feet)  
External frontage 17.055m

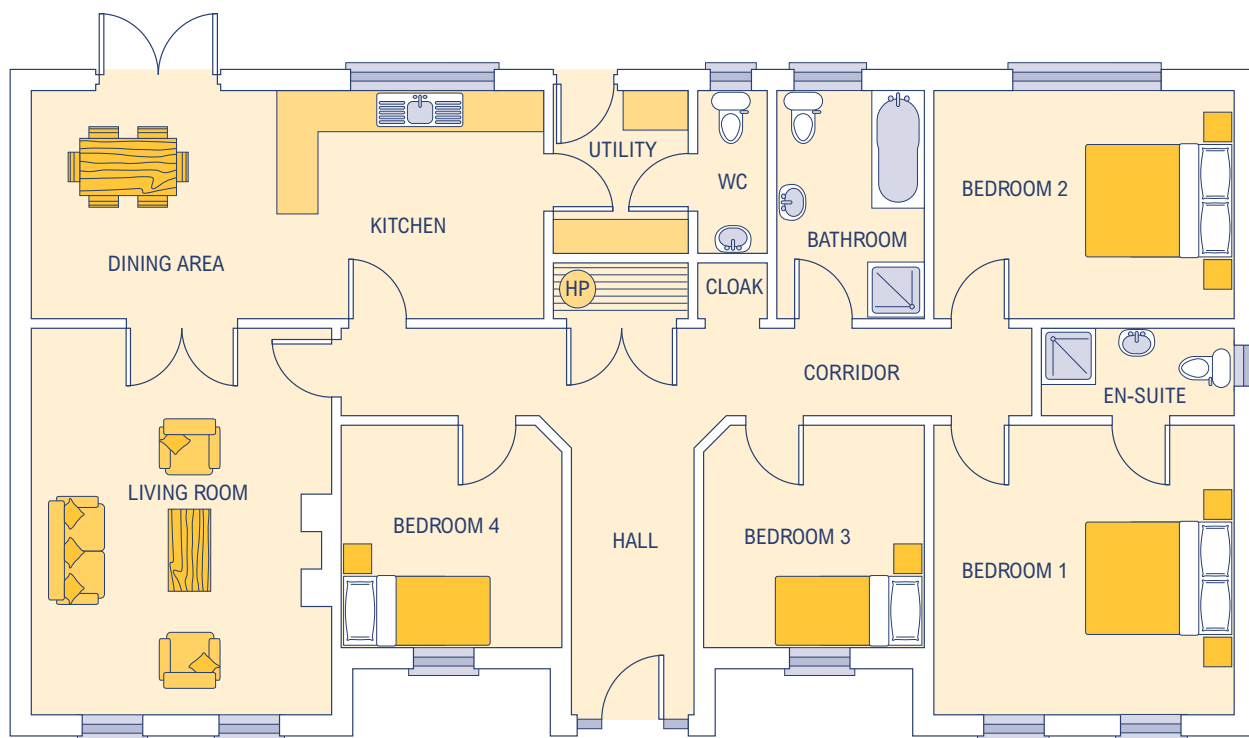
No part of this document to be reproduced in whole or in part without prior written permission from Finlay Build Ltd.

\* Approximate / nominal dimensions  
Measurements exclude recesses for wardrobes

Kitchen/Dining Room	4220 x 3240
Sitting Room	4265 x 3760
Living Room	4265 x 3760
Utility	1525 x 2440
Hall	1725 wide
Bathroom	1830 x 3240

Bedroom 1	4215 x 3240
Bedroom 2	3660 x 2930
Bedroom 3	3255 x 2930
Bedroom 4	3150 x 2930
En-suite	2440 x 1250

# SHARAVOGUE



## Dimensions\*

Internal floor area 144.49 sq. m.  
(1555 sq. feet)  
External frontage 17.655m

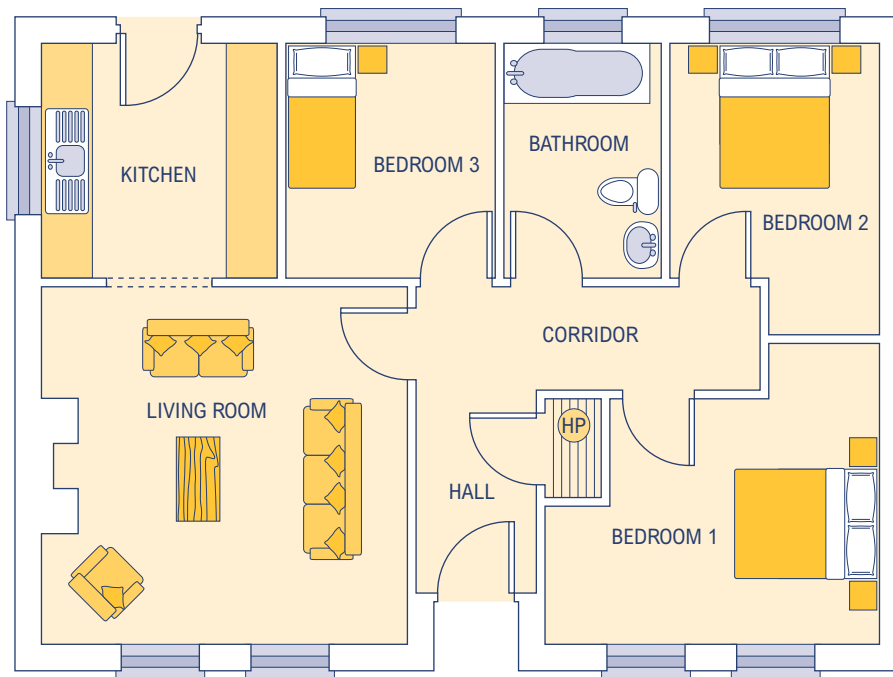
No part of this document to be reproduced in whole or in part without prior written permission from Finlay Build Ltd.

\* Approximate / nominal dimensions  
Measurements exclude recesses for wardrobes

Kitchen/Dining Room	7315 x 3255
Living Room	4265 x 5480
Utility	1930 x 2340
Hall	1725 wide
Bathroom	2130 x 3255

WC	1015 x 2340
Bedroom 1	4265 x 4130
Bedroom 2	4265 x 3255
Bedroom 3	3200 x 3220
Bedroom 4	3200 x 3220
En-suite	2745 x 1250

# TARA



## Dimensions\*

Internal floor area 68.38 sq. m.  
(736.03 sq. feet)  
External frontage 10.355m

No part of this document to be reproduced in whole or in part without prior written permission from Finlay Build Ltd.

\* Approximate / nominal dimensions  
Measurements exclude recesses for wardrobes

Kitchen	2745 x 2745
Living Room	4270 x 4165
Hall	1390 wide
Bathroom	1830 x 2745

Bedroom 1	3895 x 2865
Bedroom 2	2440 x 2745
Bedroom 3	2440 x 2745