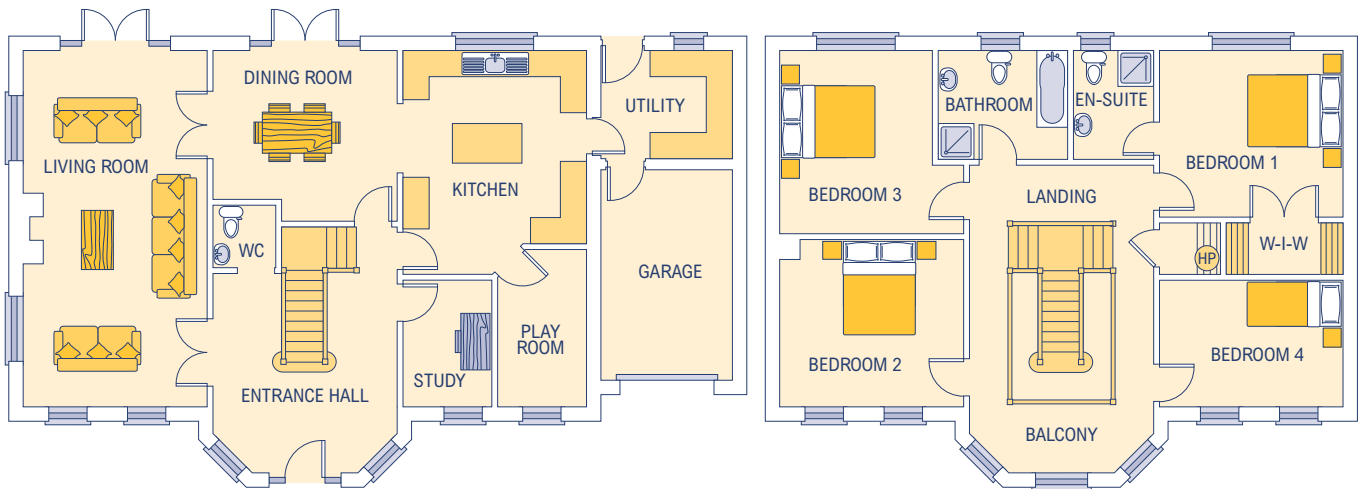


# CLAREEN



## Dimensions\*

Internal floor area 243.04 sq. m.  
(2616 sq. feet)  
External frontage 16.700m

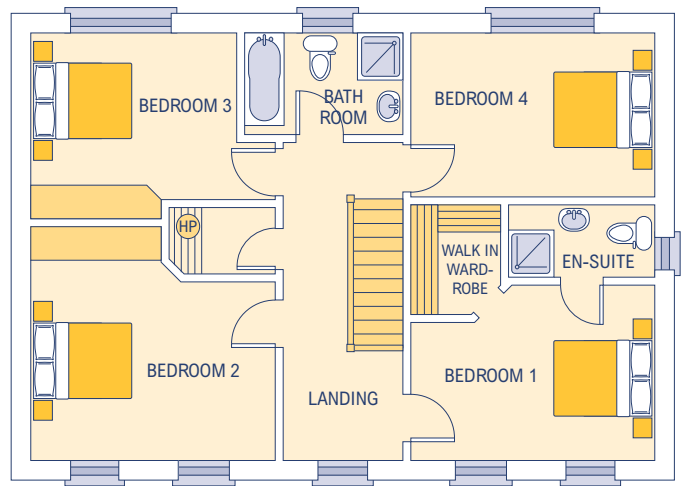
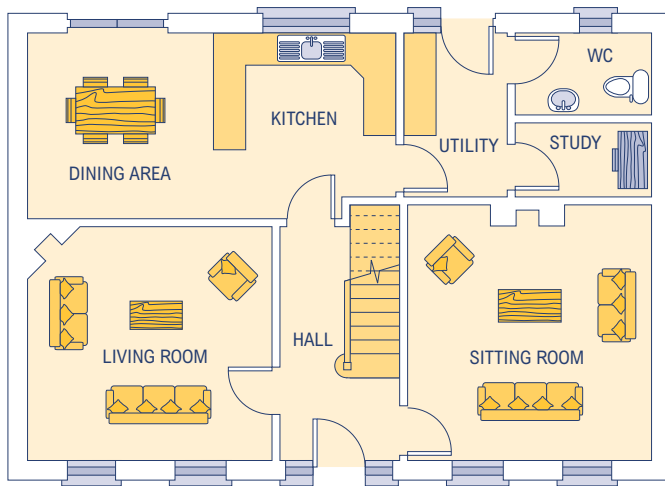
No part of this document to be reproduced in whole or in part without prior written permission from Finlay Build Ltd.

\* Approximate / nominal dimensions  
Measurements exclude recesses for wardrobes

Kitchen	4200 x 5100
Dining Room	4200 x 3900
Living Room	4200 x 8100
Utility	3000 x 2475
WC	1450 x 1450
Entrance Hall	4200 wide
Study	2050 x 2900
Play Room	2050 x 3595

Garage	3000 x 4800
Bathroom	2960 x 2500
Bedroom 1	4200 x 3800
Bedroom 2	4200 x 3825
Bedroom 3	3490 x 4175
Bedroom 4	4200 x 2900
En-suite	1850 x 2500

# CLONAVOE



## Dimensions\*

Internal floor area 167.25 sq. m.  
(1800.35 sq. feet)  
External frontage 11.575m

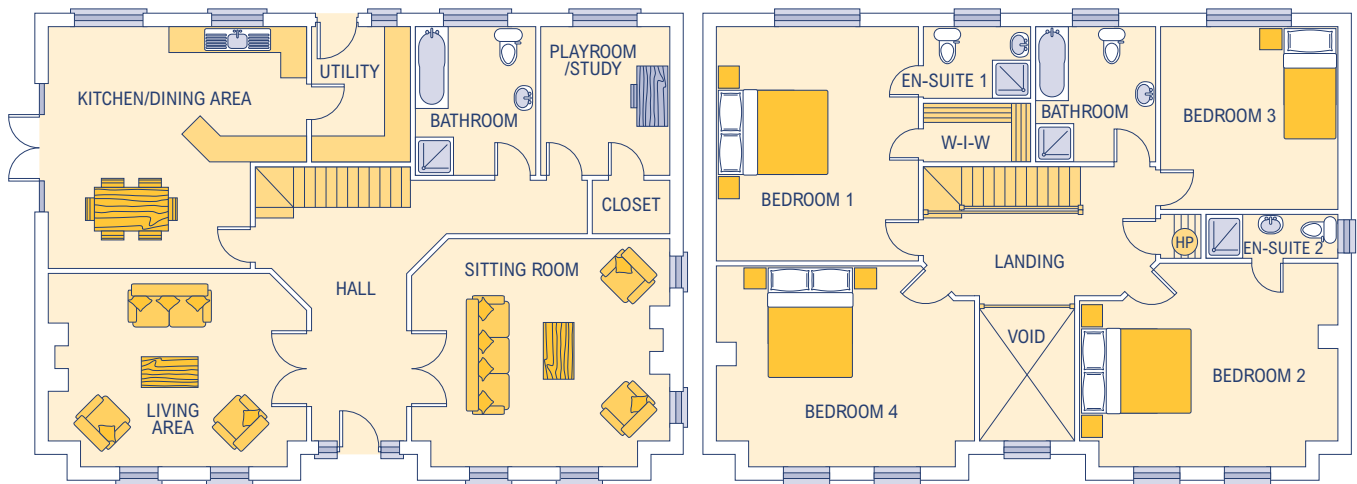
No part of this document to be reproduced in whole or in part without prior written permission from Finlay Build Ltd.

\* Approximate / nominal dimensions  
Measurements exclude recesses for wardrobes

Kitchen/Dining Room	6480 x 3355
Living Room	4320 x 4165
Sitting Room	4320 x 4575
Utility	1855 x 2945
Hall	2135 wide
WC	2440 x 1500
Study	2440 x 1345

Bedroom 1	4320 x 3155
Bedroom 2	4320 x 4165
Bedroom 3	3660 x 3555
Bedroom 4	3710 x 2945
En-suite	2595 x 1320
Walk in Wardrobe	1625 x 1320
Bathroom	3405 x 1880

# COOLDERRY



## Dimensions\*

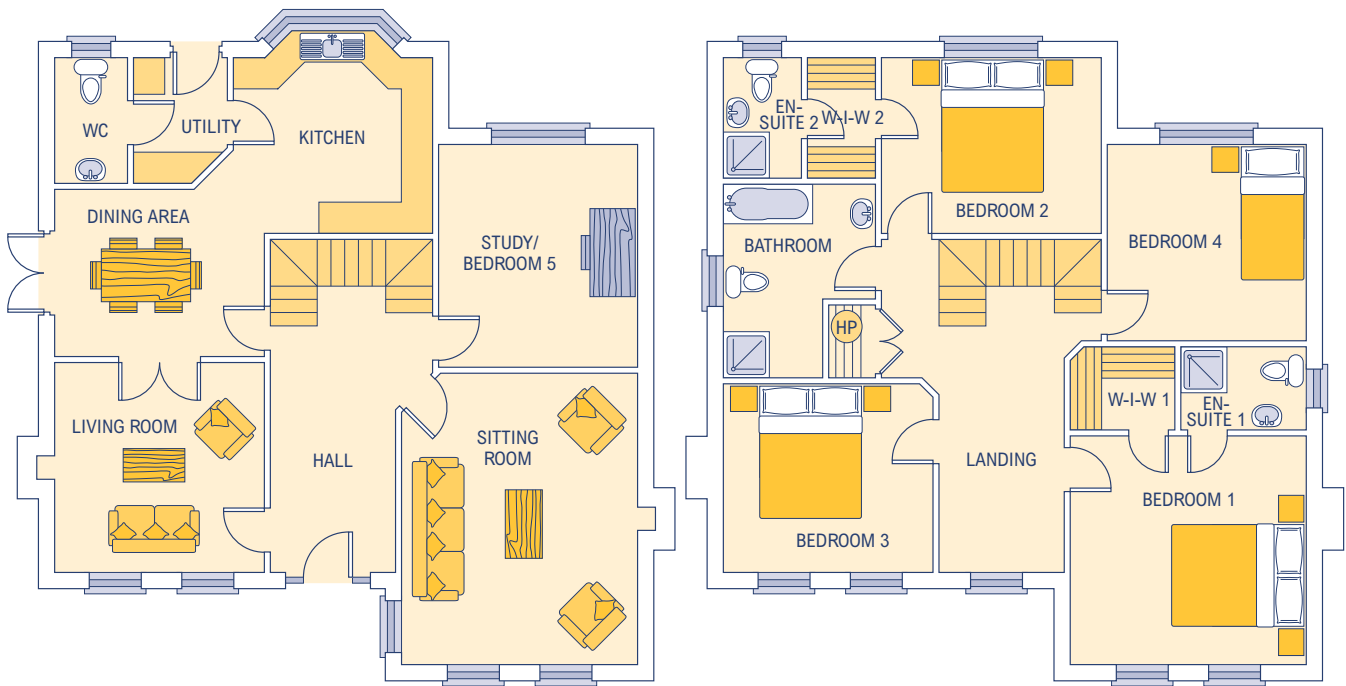
Internal floor area 289.16 sq. m.  
(3112 sq. feet)  
External frontage 15.03m

No part of this document to be reproduced in whole or in part without prior written permission from Finlay Build Ltd.

\* Approximate / nominal dimensions  
Measurements exclude recesses for wardrobes

Kitchen/Dining Room	6005 x 5620	Bedroom 1	4700 x 5450
Sitting Room	6005 x 4700	Bedroom 2	6005 x 4130
Living Room	6005 x 3900	Bedroom 3	4130 x 4250
Utility	2310 x 3150	Bedroom 4	6005 x 4070
Study	3005 x 3470	En-suite 1	2500 x 1675
Hall	2220 wide	En-suite 2	3080 x 1040
Bathroom (Ground Floor)	2810 x 3470	Bathroom (First Floor)	2800 x 3150

# COOLGARY



## Dimensions\*

Internal floor area 221.5 sq. m.  
(2384 sq. feet)  
External frontage 11.70m

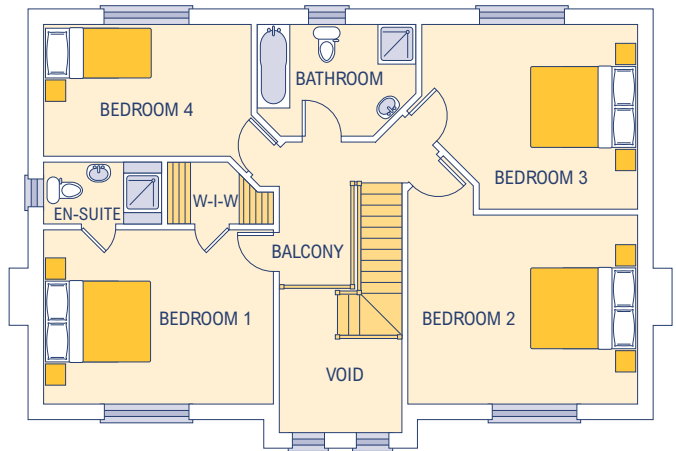
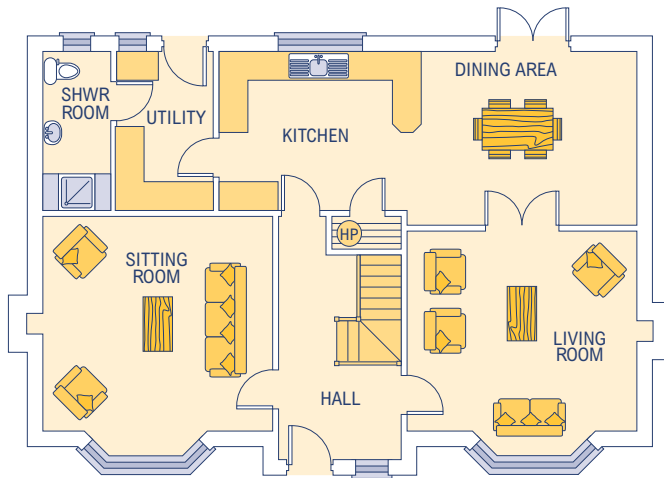
No part of this document to be reproduced in whole or in part without prior written permission from Finlay Build Ltd.

\* Approximate / nominal dimensions  
Measurements exclude recesses for wardrobes

Kitchen	3800 x 3350
Dining Area	4000 x 3200
Sitting Room	4500 x 5550
Living Room	4000 x 4000
Utility	1800 x 2400
Study	3800 x 4250
Hall	2400 wide
WC	1400 x 2400

Bedroom 1	4500 x 4350
Bedroom 2	4200 x 3350
Bedroom 3	4000 x 3600
Bedroom 4	3800 x 3750
En-suite 1	2400 x 1600
En-suite 2	1500 x 2300
Bathroom	2900 x 3700

# CRINKILL



## Dimensions\*

Internal floor area 205.22 sq. m.  
(2209 sq. feet)  
External frontage 13.10m

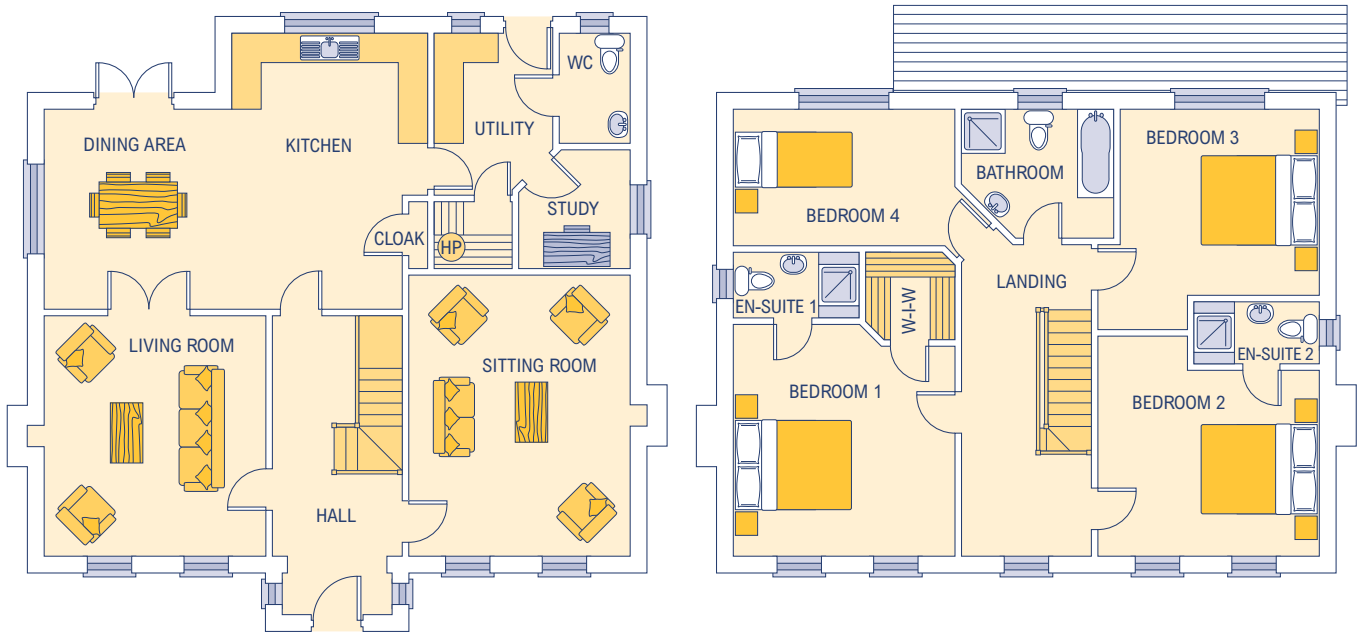
No part of this document to be reproduced in whole or in part without prior written permission from Finlay Build Ltd.

\* Approximate / nominal dimensions  
Measurements exclude recesses for wardrobes

Kitchen/Dining Room	8800 x 3669
Sitting Room	4850 x 4531
Living Room	4850 x 4231
Utility	2050 x 3369
Hall	2600 wide
Shower Room	1450 x 3369

Bedroom 1	4850 x 3690
Bedroom 2	4850 x 4000
Bedroom 3	4559 x 3900
Bedroom 4	4386 x 2790
En-suite	2509 x 1320
Bathroom	3355 x 2369

# CUSHINA



## Dimensions\*

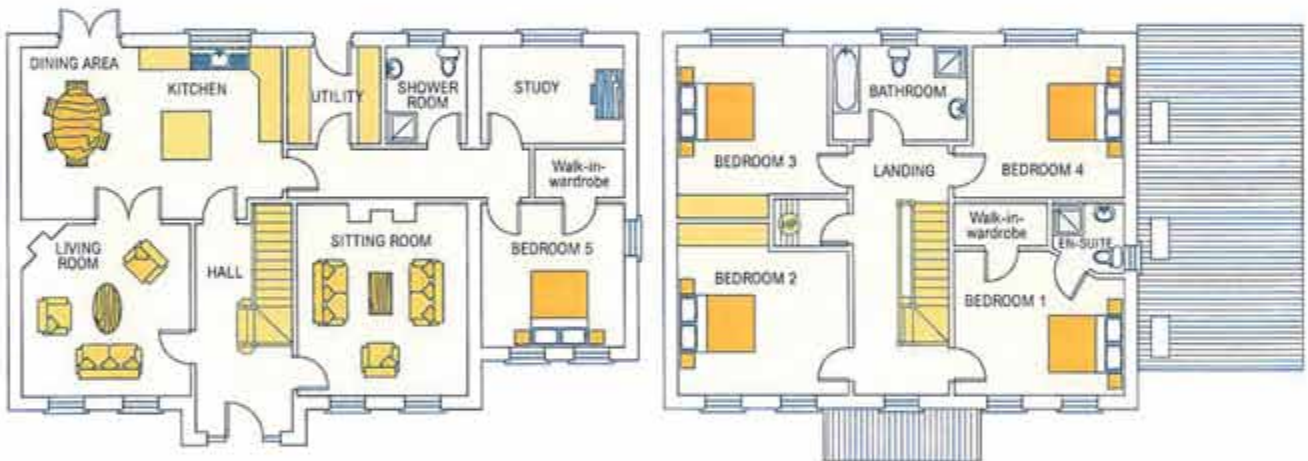
Internal floor area 219.06 sq. m.  
(2358 sq. feet)  
External frontage 12.18m

No part of this document to be reproduced in whole or in part without prior written permission from Finlay Build Ltd.

\* Approximate / nominal dimensions  
Measurements exclude recesses for wardrobes

Kitchen/Dining Room	7585 x 5465
Sitting Room	4395 x 5575
Living Room	4395 x 4775
Utility	2370 x 3221
WC	1425 x 2204
Hall	2590 wide
Study	2228 x 2361

Bathroom	3035 x 2570
Bedroom 1	4395 x 4600
Bedroom 2	4395 x 3495
Bedroom 3	3950 x 3595
Bedroom 4	4395 x 2720
En-suite 1	2509 x 1320
En-suite 2	2500 x 1550



### Dimensions\*

Internal floor area 232.05 sq. m.  
(2497 sq. feet)  
External frontage 15.59m

No part of this document to be reproduced in whole or in part without prior written permission from Finlay Build Ltd.

\* Approximate / nominal dimensions  
Measurements exclude recesses for wardrobes

Kitchen/Dining Area	4370 x 6633
Living Room	4370 x 4320
Sitting Room	4320 x 4880
Utility	2372 x 2510
Shower Room	2075 x 2510
Study	3660 x 2510
Hall	2440 wide
Bedroom 5	3660 x 3665

Bedroom 1	4320 x 3680
En-suite 1	1855 x 1800
Bedroom 2	4320 x 4370
Bedroom 3	4370 x 3813
Bedroom 4	3863 x 3860
Bathroom	3405 x 2440

# DUNKEARNEY

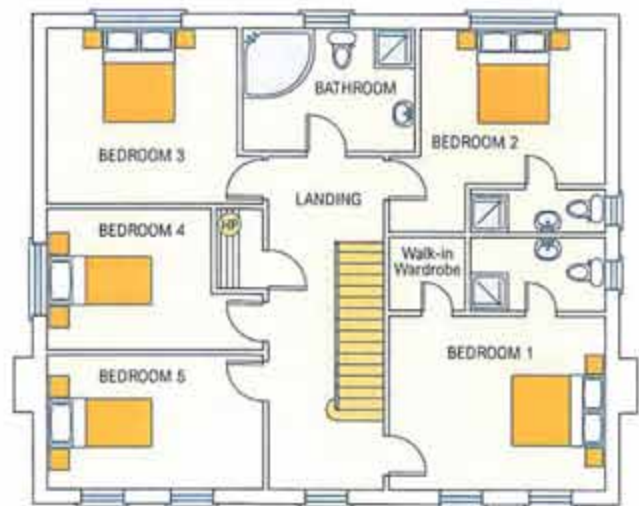
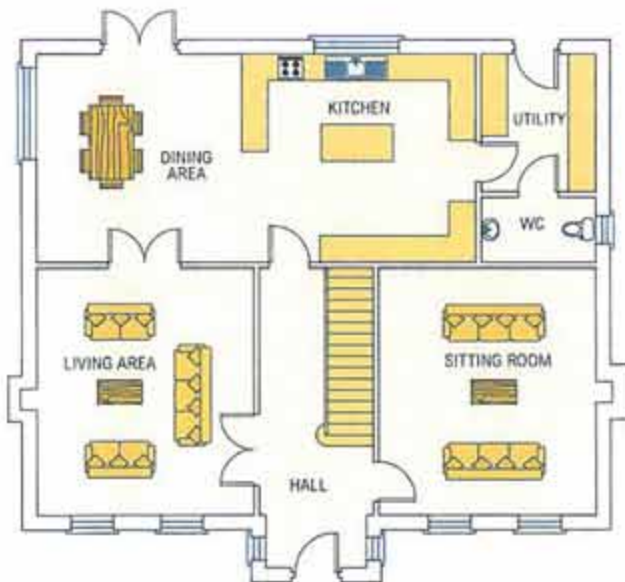


Finlay Build Limited, Clonminch, Tullamore, Co. Offaly

Ph: 057-9352668 Mob: 086-2641170 E: [info@finlaybuild.ie](mailto:info@finlaybuild.ie) W: [finlaybuild.ie](http://finlaybuild.ie)



# GLENDINE



## Dimensions\*

Internal floor area 246.42 sq. m.  
(2652 sq. feet)  
External frontage 12.474m

No part of this document to be reproduced in whole or in part without prior written permission from Finlay Build Ltd.

\* Approximate / nominal dimensions  
Measurements exclude recesses for wardrobes

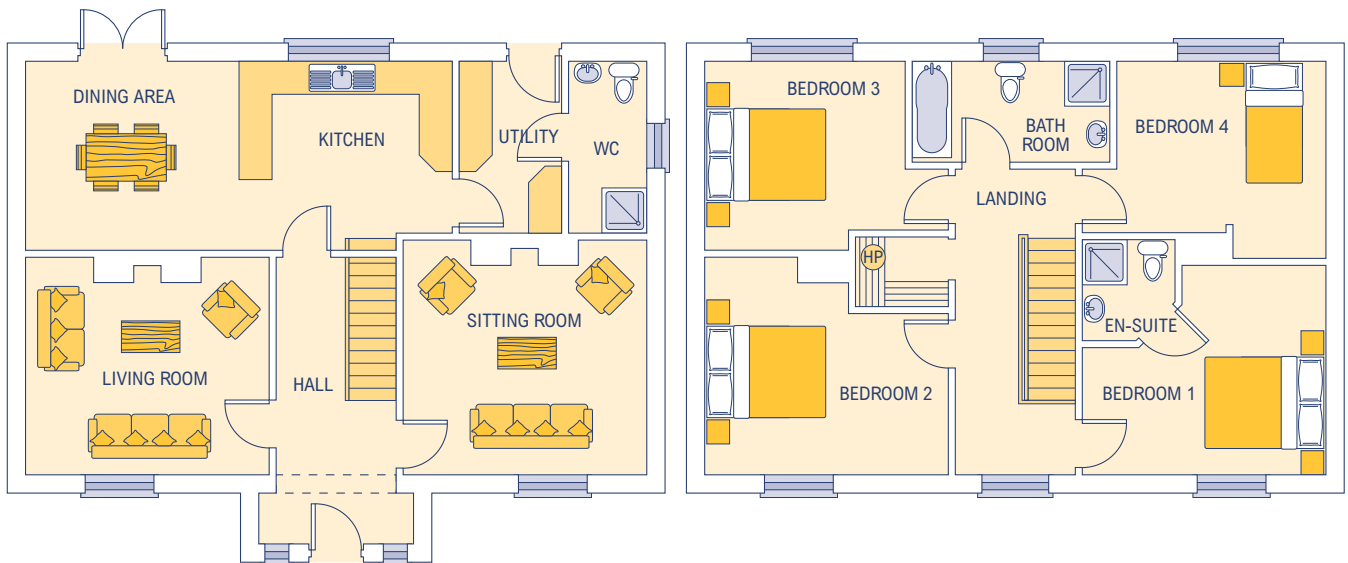
Kitchen/Dining Area	9335 x 4455
Sitting Room	4620 x 5280
Living Room	4620 x 5280
Utility	2440 x 2955
Study	3800 x 4250
Hall	2435 wide
WC	2440 x 1400

Bedroom 1	4620 x 3737
En-suite 1	2895 x 1545
Bedroom 2	3960 x 3300
En-suite 2	2895 x 950
Bedroom 3	4070 x 3755
Bedroom 4	4620 x 3000
Bedroom 5	4620 x 2882
Bathroom	3645 x 2638

# GLENDINE



# KILBRIDE



## Dimensions\*

Internal floor area 163.9 sq. m.  
(1764 sq. feet)  
External frontage 11.575

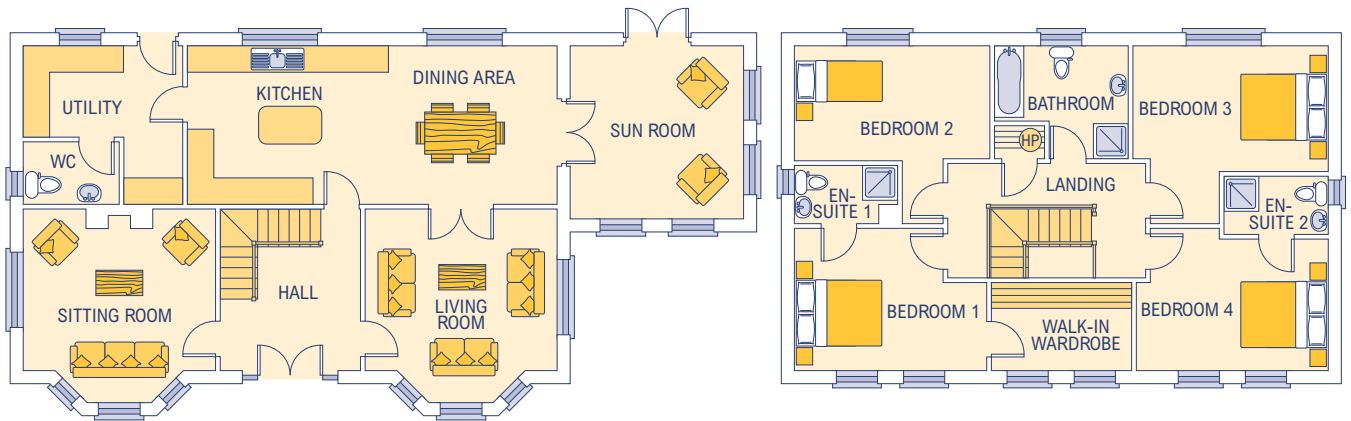
No part of this document to be reproduced in whole or in part without prior written permission from Finlay Build Ltd.

\* Approximate / nominal dimensions  
Measurements exclude recesses for wardrobes

Kitchen/Dining Room	7545 x 3355
Living Room	4320 x 3860
Sitting Room	4320 x 4165
Utility	1830 x 3050
Hall	2135 wide
WC	1400 x 3050

Bathroom	3505 x 1800
Bedroom 1	4320 x 3715
Bedroom 2	4320 x 3860
Bedroom 3	3560 x 3355
Bedroom 4	3710 x 3500
En-suite	1660 x 1800

# LISBRYAN



## Dimensions\*

Internal floor area 219.24 sq. m.  
(2360 sq. feet)  
External frontage 17.774m

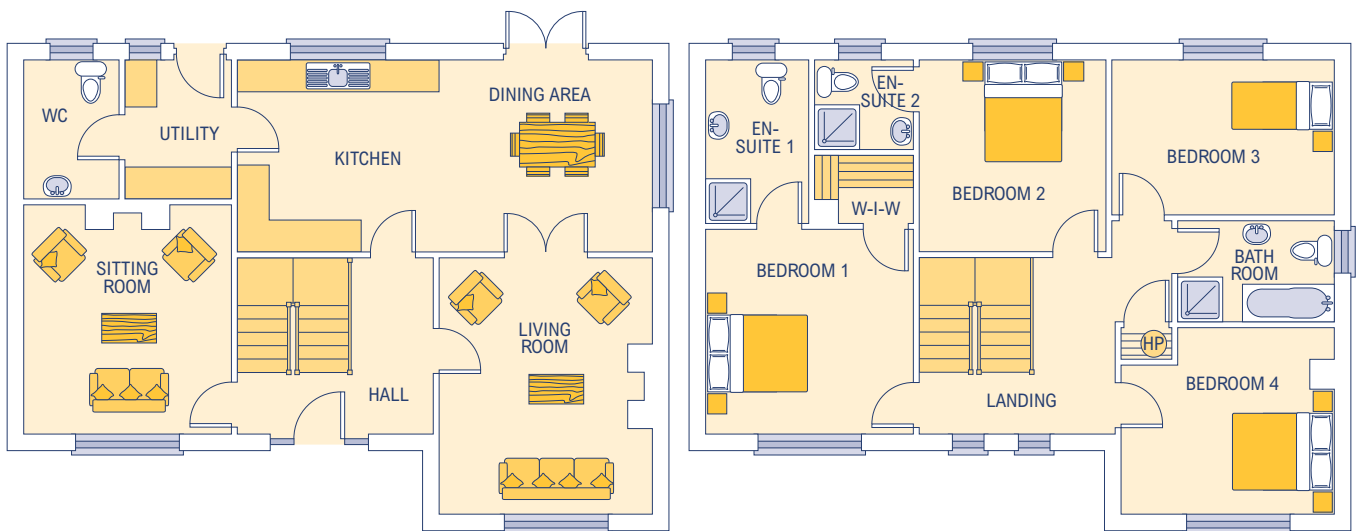
No part of this document to be reproduced in whole or in part without prior written permission from Finlay Build Ltd.

\* Approximate / nominal dimensions  
Measurements exclude recesses for wardrobes

Sitting Room	4592 x 3860
Hall	3350 wide
Living Room	4592 x 3860
WC	2300 x 1500
Utility	3811 x 3790
Kitchen/Dining Room	8823 x 3790
Sun Room	4140 x 4140

Bedroom 1	4592 x 3400
Bedroom 2	4667 x 4250
Bedroom 3	4667 x 4250
Bedroom 4	4592 x 3400
Bathroom	3200 x 2703
En-suite 1	2471 x 1400
En-suite 2	2500 x 1400
Walk in Wardrobe	3350 x 2110

# LISDERMOT



## Dimensions\*

Internal floor area 177.08 sq. m.  
(1906 sq. feet)  
External frontage 12.375m

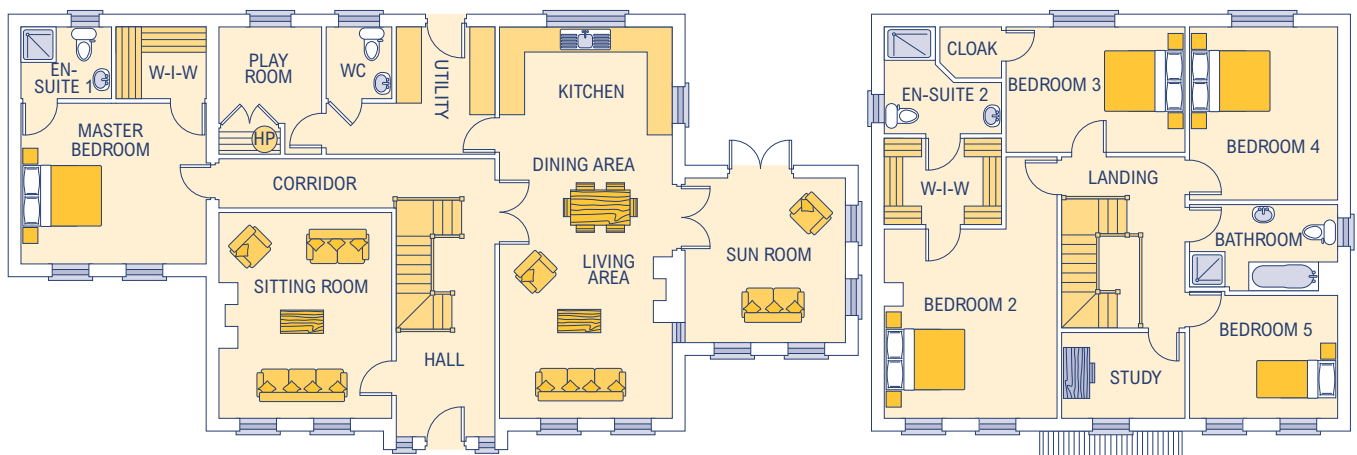
No part of this document to be reproduced in whole or in part without prior written permission from Finlay Build Ltd.

\* Approximate / nominal dimensions  
Measurements exclude recesses for wardrobes

Sitting Room	3900 x 4300
Hall	3675 x 3310
WC	1800 x 2610
Utility	2000 x 2610
Kitchen/Dining Room	7775 x 3600
Living Room	4000 x 4810

Bedroom 1	3900 x 3840
Bedroom 2	3500 x 3600
Bedroom 3	4175 x 2900
Bedroom 4	4000 x 3500
Bathroom	2940 x 1900
En-suite 1	1940 x 3070
En-suite 2	1860 x 1690
Walk in Wardrobe	1860 x 1280

# RATHDRUM



## Dimensions\*

Internal floor area 254.5 sq. m.  
(2740 sq. feet)  
External frontage 20.60m

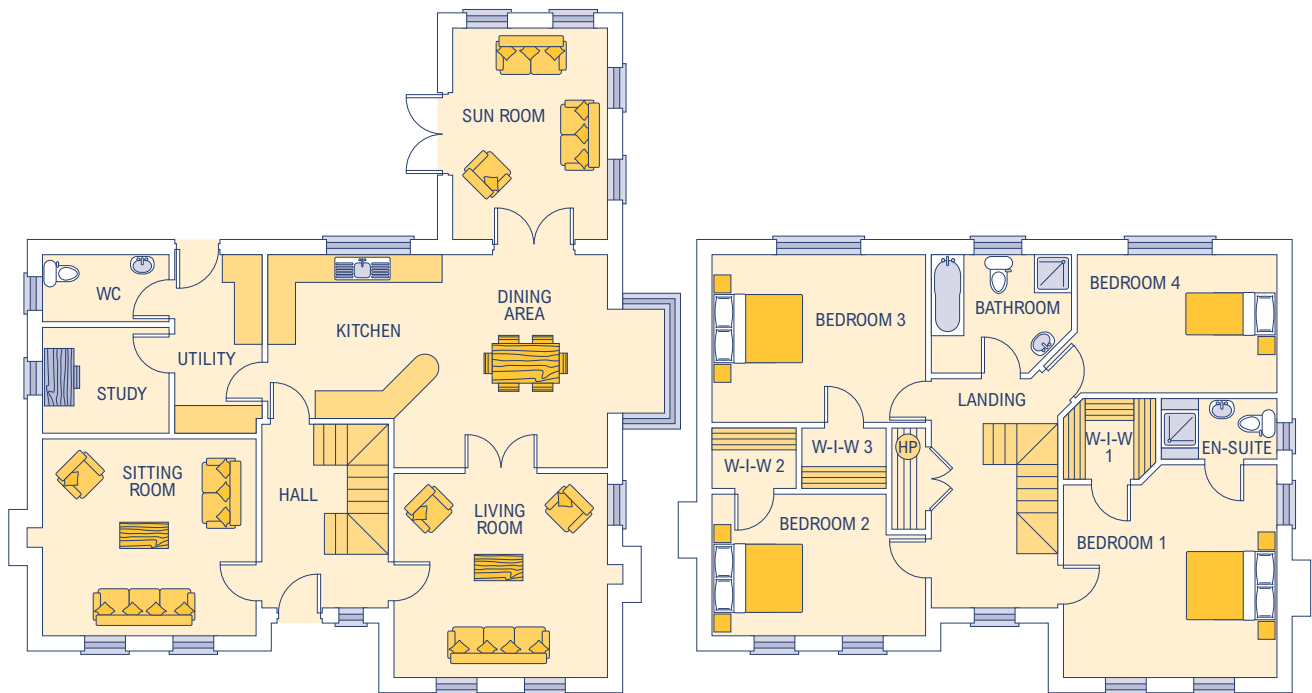
No part of this document to be reproduced in whole or in part without prior written permission from Finlay Build Ltd.

\* Approximate / nominal dimensions  
Measurements exclude recesses for wardrobes

Kitchen/Living Room	4200 x 9500
Sitting Room	4200 x 4950
Utility	2400 x 3100
Play Room	2500 x 3100
Hall	2400 wide
WC	1600 x 1750
Bathroom	3600 x 2100
Master Bedroom	4500 x 3907

Bedroom 2	4200 x 4600
Bedroom 3	4350 x 3050
Bedroom 4	3600 x 4210
Bedroom 5	3600 x 2990
Study	3000 x 2090
En-suite 1	2200 x 1750
En-suite 2	2850 x 2600

# TEGAN



## Dimensions\*

Internal floor area 224.02 sq. m.  
(2411 sq. feet)  
External frontage 14.03m

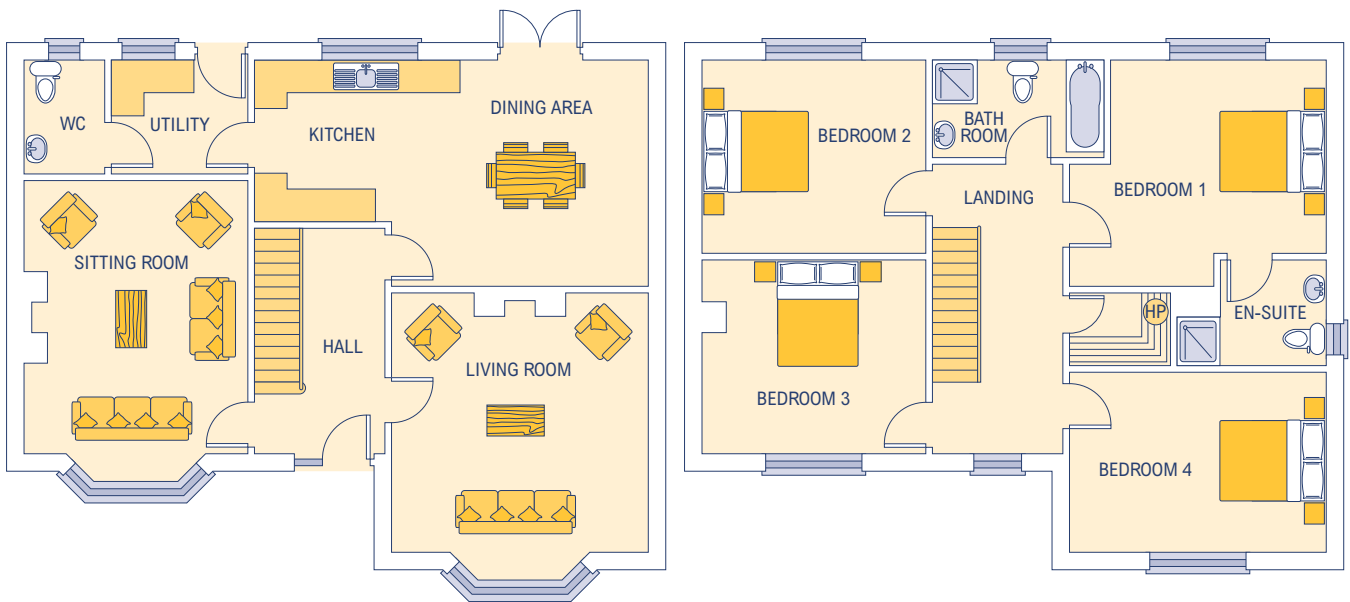
No part of this document to be reproduced in whole or in part without prior written permission from Finlay Build Ltd.

\* Approximate / nominal dimensions  
Measurements exclude recesses for wardrobes

Kitchen/Dining Room	7331 x 4605
Sitting Room	4620 x 4250
Living Room	4620 x 4415
Utility	1899 x 3870
WC	1899 x 3870
Study	2745 x 2300
Hall	2735 wide
Sun Room	3352 x 4572

Bedroom 1	4620 x 4600
Walk in Wardrobe 1	2011 x 1750
En-suite	2509 x 1320
Bedroom 2	4620 x 3067
Walk in Wardrobe 2	1835 x 1320
Bedroom 3	4620 x 3633
Walk in Wardrobe 3	1835 x 1320
Bedroom 4	4320 x 3000
Bathroom	3035 x 2570

# WESTBROOK



## Dimensions\*

Internal floor area 188.96 sq. m.  
(2033.96 sq. feet)  
External frontage 12.180

No part of this document to be reproduced in whole or in part without prior written permission from Finlay Build Ltd.

\* Approximate / nominal dimensions  
Measurements exclude recesses for wardrobes

Kitchen/Dining Room	7315 x 4215
Living Room	4775 x 4825
Sitting Room	4165 x 5080
Utility	2550 x 2135
Hall	2440 wide
WC	1515 x 2135

Bathroom	3200 x 1830
Bedroom 1	4015 x 3605
Bedroom 2	4165 x 3605
Bedroom 3	4165 x 3610
Bedroom 4	4775 x 3355
En-suite	2780 x 1980