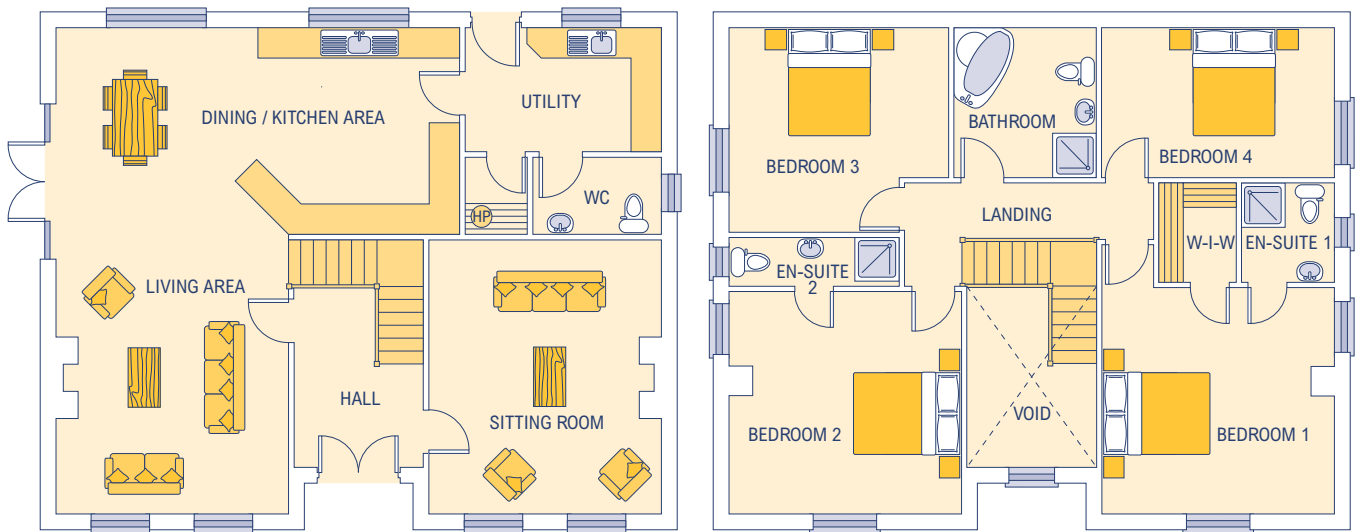


# BALLYCOMMON



## Dimensions\*

Internal floor area 215.10 sq. m.  
(2314 sq. feet)  
External frontage 12.30m

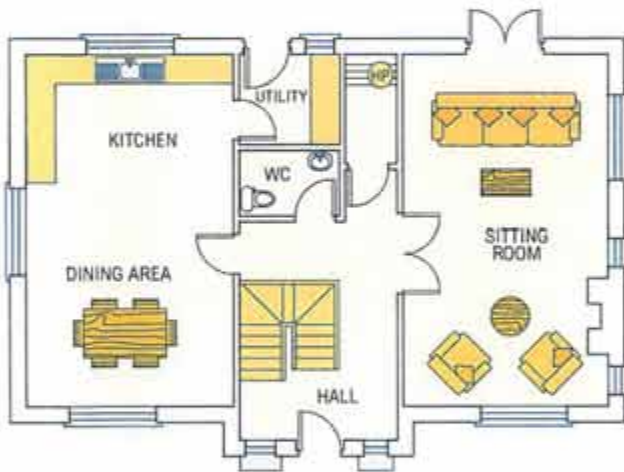
No part of this document to be reproduced in whole or in part without prior written permission from Finlay Build Ltd.

\* Approximate / nominal dimensions  
Measurements exclude recesses for wardrobes

Sitting Room	4500 x 5300
Hall	2500 wide
Utility	3800 x 2400
Hot Press	1200 x 1500
WC	2500 x 1500
Kitchen/Dining/Living Area	7800 x 9400

Bedroom 1	4500 x 4400
Bedroom 2	4500 x 4300
Bedroom 3	4250 x 3950
Bedroom 4	4500 x 2900
Bathroom	2750 x 2900
Walk in Wardrobe	1500 x 1900
En-suite 1	1800 x 1900
En-suite 2	3300 x 950

# BALLYDUFF



## Dimensions\*

Internal floor area 182 sq. m.  
(1964 sq. feet)  
External frontage 12.75m

No part of this document to be reproduced in whole or in part without prior written permission from Finlay Build Ltd.

\* Approximate / nominal dimensions  
Measurements exclude recesses for wardrobes

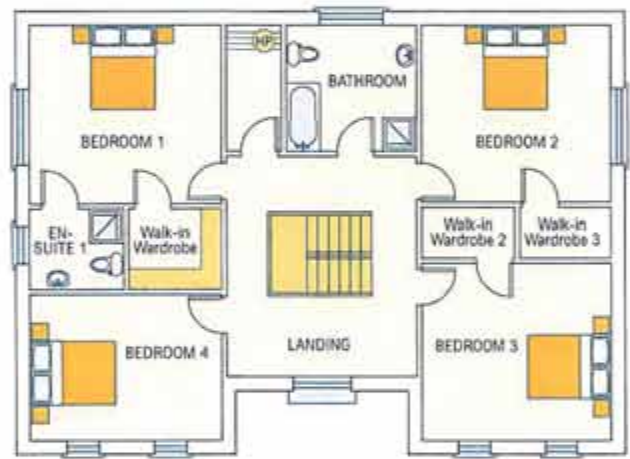
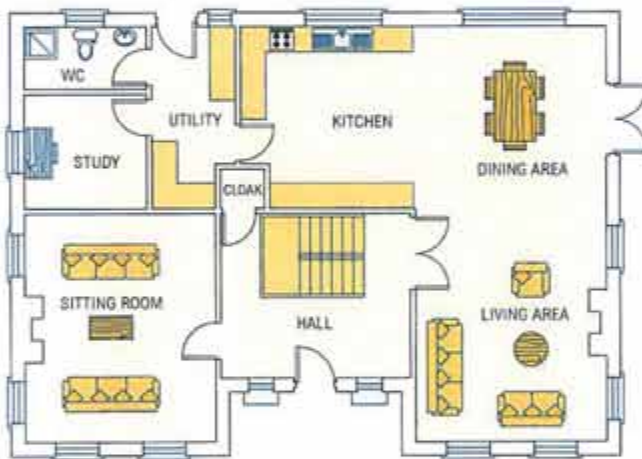
Kitchen/Dining Area	4300 x 7350
Sitting Room	4300 x 7350
Hall	3300 wide
Utility	2100 x 1900
WC	2100 x 1400

Bedroom 1	4000 x 4100
En-suite	1800 x 1800
Bedroom 2	3900 x 3500
Bedroom 3	4300 x 3750
Bedroom 4	4300 x 3150
Bathroom	2095 x 3500

# BALLYDUFF



# COOLREE



## Dimensions\*

Internal floor area 254.42 sq. m.  
(2738 sq. feet)  
External frontage 12.154m

No part of this document to be reproduced in whole or in part without prior written permission from Finlay Build Ltd.

\* Approximate / nominal dimensions  
Measurements exclude recesses for wardrobes

Kitchen/Dining Area	8600 x 4325
Dining/Living Area	4500 x 9800
Sitting Room	4500 x 5375
Hall	4500 wide
Utility	2000 x 4325
WC	2900 x 1500
Study	2900 x 2725

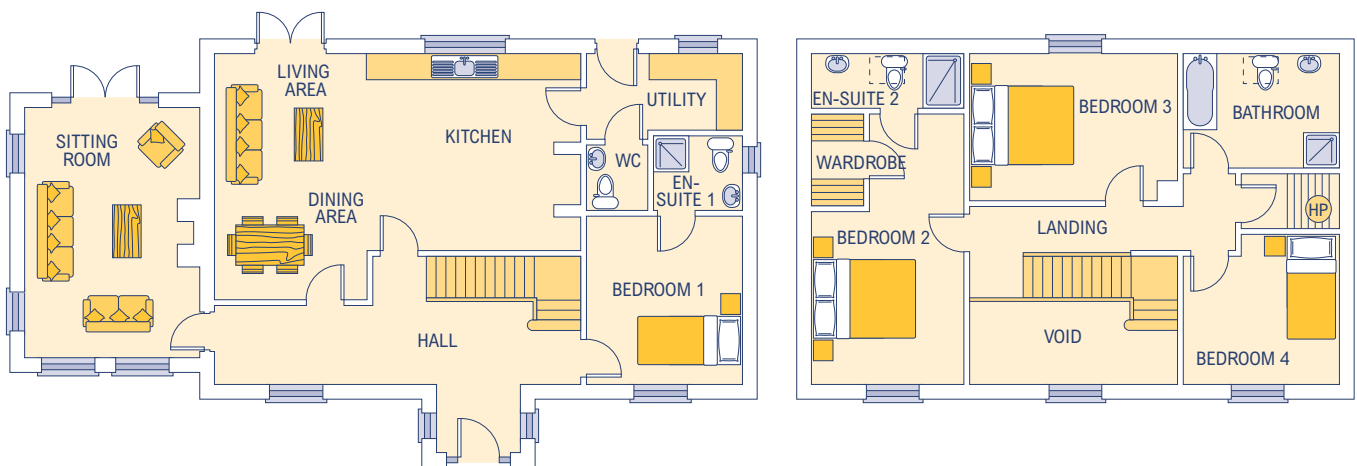
Bedroom 1	4500 x 4240
En-suite	2200 x 1900
Bedroom 2	4500 x 4200
Bedroom 3	4500 x 4200
Bedroom 4	4500 x 3460
Bathroom	3100 x 3000

# COOLREE





# DEERPARK



## Dimensions\*

Internal floor area 203.44 sq. m.  
(2189 sq. feet)  
External frontage 16.71m

No part of this document to be reproduced in whole or in part without prior written permission from Finlay Build Ltd.

\* Approximate / nominal dimensions  
Measurements exclude recesses for wardrobes

Porch	1900 wide
Hall	8235 x 1800
Sitting Room	3950 x 5635
Kitchen/Living/Dining Room	8235 x 5545
Utility	3525 x 1945
WC	1400 x 1500
Bedroom 1	3525 x 3800
En-suite 1	2025 x 1700

Bedroom 2	3450 x 6095
Wardrobe	1200 x 2100
En-suite 2	3450 x 1250
Bedroom 3	4685 x 3325
Bathroom	3525 x 2595
Hot Press	2225 x 1250
Bedroom 4	3525 x 3400

# HAWKSWOOD



## Dimensions\*

Internal floor area 191.47 sq. m.  
(2061 sq. feet)  
External frontage 13.7m

No part of this document to be reproduced in whole or in part without prior written permission from Finlay Build Ltd.

\* Approximate / nominal dimensions  
Measurements exclude recesses for wardrobes

Kitchen/Dining/Living Area	5000 x 7300
Sitting Room	5000 x 7100
Utility	2600 x 1725
Hall	2850 wide
WC	1725 x 1600

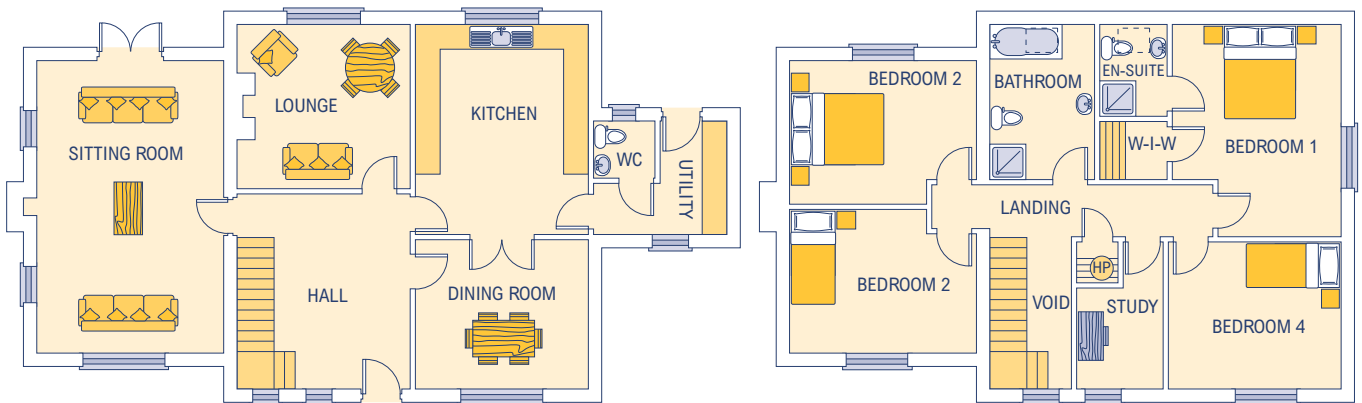
Bedroom 1	4038 x 5000
En-suite	2363 x 2000
Bedroom 2	5000 x 3150
Bedroom 3	4050 x 3250
Bedroom 4	3650 x 2550
Bathroom	2700 x 2550

# HAWKSWOOD





# KILEEN



## Dimensions\*

Internal floor area 225.33 sq. m.  
(2425 sq. feet)  
External frontage 17.195m

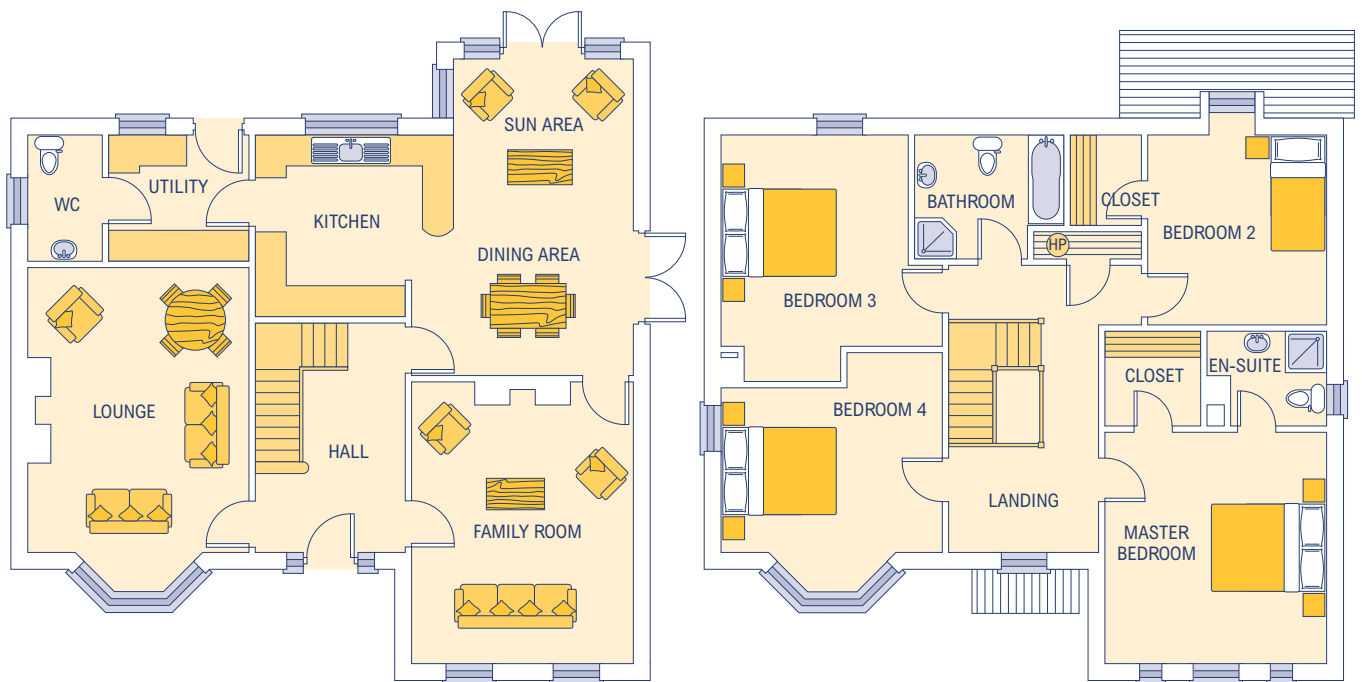
No part of this document to be reproduced in whole or in part without prior written permission from Finlay Build Ltd.

\* Approximate / nominal dimensions  
Measurements exclude recesses for wardrobes

Kitchen	4180 x 5065
Dining Room	4180 x 3610
Sitting Room	4510 x 7040
Lounge	4180 x 3965
Utility	3225 x 2750
WC	1500 x 1400
Hall	4180 wide

Study	2100 x 3550
Bathroom	2540 x 3750
Bedroom 1	4080 x 5125
Bedroom 2	4510 x 3470
Bedroom 3	4510 x 3470
Bedroom 4	4180 x 3550
En-suite	1640 x 2025

# KILLEIGH



## Dimensions\*

Internal floor area 212.72 sq. m.  
(2289 sq. feet)  
External frontage 12.225m

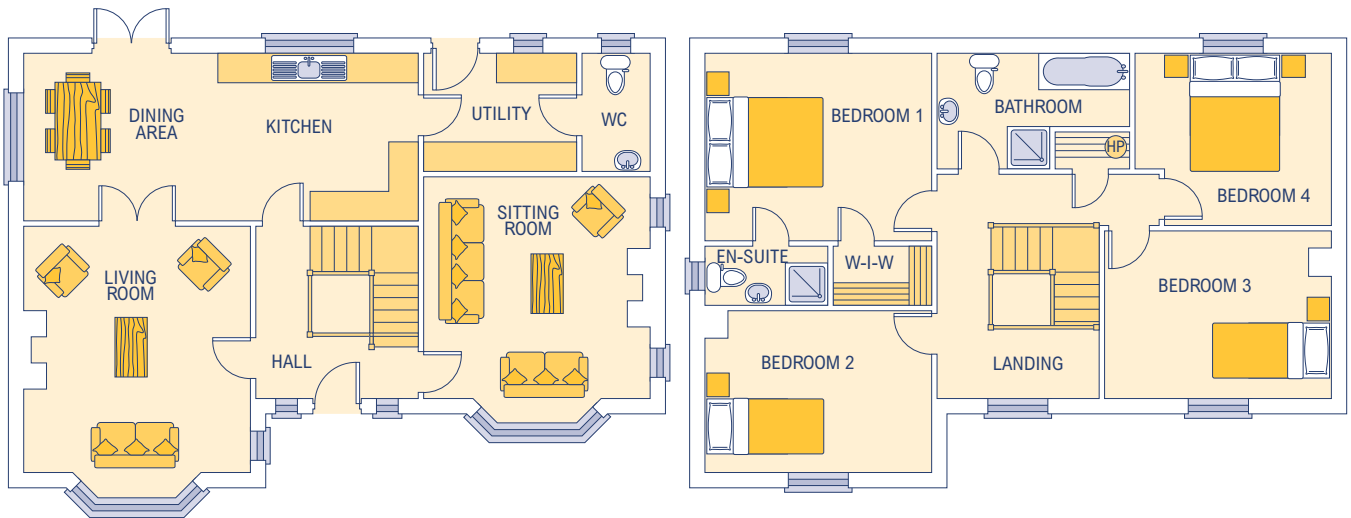
No part of this document to be reproduced in whole or in part without prior written permission from Finlay Build Ltd.

\* Approximate / nominal dimensions  
Measurements exclude recesses for wardrobes

Kitchen/Dining Room	7260 x 6085
Sitting Room	4265 x 5425
Living Room	4265 x 5480
Utility	2715 x 2435
WC	1450 x 2435
Hall	2895 wide

Bathroom	2890 x 2400
Master Bedroom	4265 x 4460
Bedroom 2	3455 x 3660
Bedroom 3	3605 x 4055
Bedroom 4	4265 x 3175
En-suite	2310 x 1830

# KILMUCKLIN



## Dimensions\*

Internal floor area 193.70 sq. m.  
(2085 sq. feet)  
External frontage 13.30m

No part of this document to be reproduced in whole or in part without prior written permission from Finlay Build Ltd.

\* Approximate / nominal dimensions  
Measurements exclude recesses for wardrobes

Kitchen/Dining Room	8000 x 3400
Sitting Room	4600 x 4500
Living Room	4600 x 5000
Utility	3100 x 2400
WC	1400 x 2400
Hall	3300 wide

Bathroom	3900 x 2350
Bedroom 1	4600 x 3813
Bedroom 2	4600 x 3813
Bedroom 3	4600 x 3400
Bedroom 4	4000 x 3500
En-suite	2500 x 1200

# LOUGHCLOSE



## Dimensions\*

Internal floor area 239.00 sq. m.  
(2573 sq. feet)  
External frontage 16.00m

No part of this document to be reproduced in whole or in part without prior written permission from Finlay Build Ltd.

\* Approximate / nominal dimensions  
Measurements exclude recesses for wardrobes

Sitting Room	5000 x 6500
WC	1600 x 1500
Utility	3700 x 3150
Hall	3700 x 3250
Kitchen/Dining/Living Area	6500 x 9300

Bedroom 1	6500 x 4000
Bedroom 2	6500 x 3600
Bedroom 3	4000 x 3200
Bedroom 4	5000 x 3200
Bathroom	3475 x 2100
Hot Press	1125 x 2100
Walk in Wardrobe	2100 x 1500
En-suite	2900 x 1500