



**Colours of Nature®**



**Ceresit**



## **Ceresit Ceretherm System**

**Durable solution for your comfort and style**

Thanks to Ceresit Ceretherm **ETICS - External Thermal Insulation Composite System**, you can enjoy higher living comfort with significantly reduced spending on heating or cooling your house. Such an insulation also contributes to the unique aesthetic look of your house. More benefits of the system to be found inside.

**Kilsaran**  
INTERNATIONAL



**Henkel**

**Quality for Professionals**

# Why should buildings be thermally protected?

High quality thermal insulation offers numerous benefits that make your life comfortable and more cost effective. Ceresit Ceretherm ETICS – External Thermal Insulation Composite System excels in all these which lets you fully enjoy your house and make significant savings in your budget. ETICS can be applied on large objects and single family houses, both on new buildings and on those subject to thermal renovation, so it is never too late to improve your place!

## Cut down on energy costs

**Save money by using less energy for heating or cooling your house.**

In an non-insulated family house up to 40% of the overall heat is lost through the walls. Insulation system reduces that loss significantly lowering your heating and cooling costs.



## Live in the comfort zone

**By always experiencing the perfect temperature inside.**

ETICS works in your favour not only in cold seasons, but also in hot summers. Thanks to thermal insulation the temperature inside your house will always stay comfortable and balanced.



## Enjoy the warmth

**So you and your family are more comfortable.**

Thermal insulation provides higher temperatures inside through all those autumn and winter months. The walls themselves are also warmer which contributes to the overall feeling of comfort.



## Make your facade stylish and beautiful

**Because looks always count.**

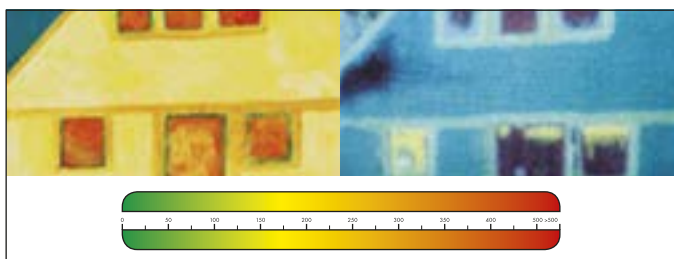
Applying the insulating system contributes to the attractive appearance of the facade. Through a wide choice of plasters and paints your house will match your own taste.



## Raise value of your house

**Via raising its energy class.**

Thermally insulated buildings stand out with low energy consumption proven by its energy passport. This way, by applying ETICS, you will increase your house's market value.



## Protect the environment

**By using less fossil fuels.**

Did you know that the heating of non-insulated buildings is causing up to 35% of the global carbon emissions? By reducing the heating needs one protects the environment.



## Trust professional know-how and experience

### Excellent, certified solutions by Henkel

The high quality of Ceresit thermal insulation system comes from Henkel's vast know-how and experience.

Ceresit provides thermal insulation products and systems which are:

- durable, efficient and long-lasting
- innovative and based on new technologies
- enriched with BioProtect formula against facade biological contamination (algae, fungi etc.)
- certified by European Technical Approval (ETA), which is best proof of high quality and reliability of Ceresit Ceretherm ETICS products
- varied (according to your needs and economical potential)
- suitable for newly built and also "old" renovated buildings



### Make sure you only use components of Ceresit Ceretherm ETICS system.

Only system components of one producer are:

- fully compatible in terms of physical and chemical properties
- entitled to guarantee
- fully checked in extreme conditions
- tested for 25-year durability



### Stylish and beautiful finish

ETICS enhances not only a building's practical properties but also its appearance.

Thanks to the wide choice of the system's plasters and paints the facade gains attractive and individualised look.

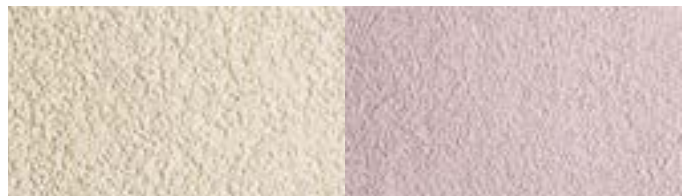
Ceresit plasters provide an effective protection against water and dirt, additionally there is a choice of types and textures within mineral, acrylic, silicate, silicone or hybrid silicate-silicone plasters.

#### Rustic textures



It is enriched with special grains, that create a vertical, horizontal or circular distinctive pattern.

#### Stone textures



High content of tiny grains creates homogeneous stone-like appearance which is an elegant choice for many houses.

### Wide choice of Colours of Nature®

Plasters come in various colours that make your house look the way you really like. If you want to repaint your facade, go for your choice of our high quality paints.







Oceans and seas, freshness and clearness. This is the blue colour that brings vitality and energy into your life. Ceresit gives you a wide choice of shades from very fair blues to the most intensive ones.

A perfect choice for those who like warm, friendly yellows and fair browns. These are the colours that inspire optimism and joy of life and bring the sunny memories. Enjoy your house in one of the sandy shades!



# Colours of Nature<sup>®</sup>

to be experienced at your very own house

The colours presented above refer to all plasters and paints offered by Ceresit. These are acrylic, silicone, silicate, silicone-silicate plasters and acrylic, silicone, silicate paints. Colours are reproduced by the appliance of printing methods, hence may slightly differ from the original colours. In case of strategic importance of colour choice, we recommend checking the actual sample.

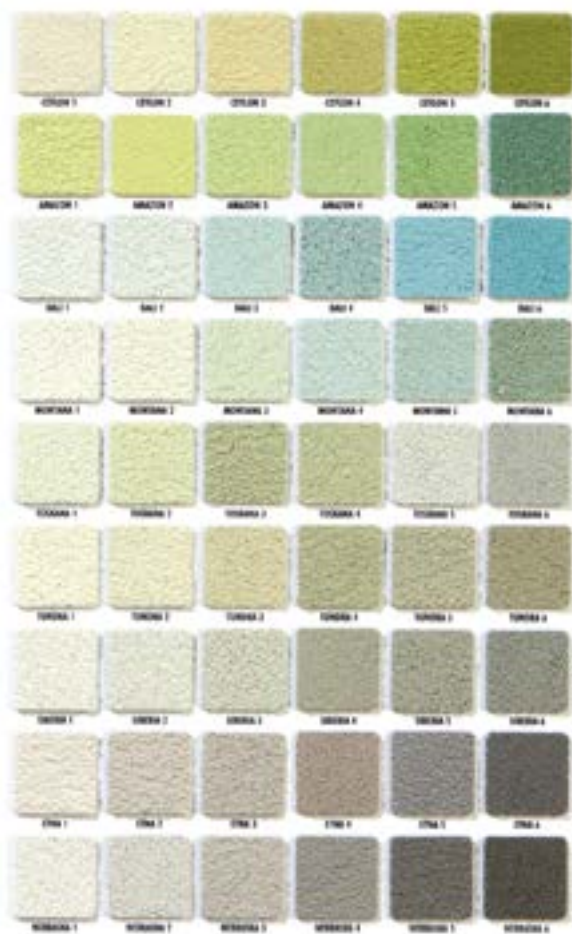


**Quality for Professionals**



Andalusia browns and Provence lavender are the examples of this largest Ceresit colour group. It represents love for nature and tradition and the basic need of being close to the earth. These are authentic colours which are always beautiful, regardless of quick fashions and moods.

Fair or dark, pure green or bluish. These are the colours that represent peace, harmony and love for nature. Designed by Ceresit they will make your house a part of nature and a positive element of your local landscape.







Mosaic plasters provide ready-for-use, decoratively coloured top plaster coat. They are recommended for use both on internal and external building walls, that tend to become dirty quickly, e.g. in corridors, stairways, plinth, on pedestals, windows and door reveals. They bridge any existing surface scratches and provide a beautiful finish to your house.



**Quality for Professionals**

## It's all about the system

The systems consist of easy to prepare or ready to use elements with the main insulating material being either foamed polystyrene or mineral wool. Whether polystyrene or wool – their insulating effectiveness, weather and strike resistance, as well as resistance to microbiological contamination (mould and algae), are very high and comparable. However there are some other factors worth considering while making the final choice:

### Foamed polystyrene systems



- for all brick and concrete structures
- economical solution
- very light material
- no danger of excessive load to building's construction
- easy to work with
- no spreading fire

### Mineral wool systems



- for all brick and concrete structures, wood and wood-based and frames structures
- material with high vapour permeability
- very good noise insulation
- for buildings with a curved outline
- non-flammable

### Choose your system

Ceresit Ceretherm ETICS come in various systems that meet individual requirements. Have a look and decide which one is best for you and your house.

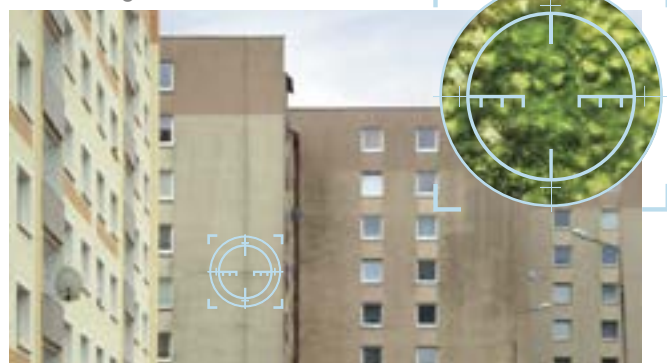
		Foamed polystyrene systems				Mineral wool systems	
		Ceretherm Popular System	Ceretherm Classic System	Ceretherm Premium System	Ceretherm Express System	Ceretherm Classic Wool System	Ceretherm Premium Wool System
		Economic	Optimal	Excellent	Very fast & innovative	Optimal	Excellent
		<ul style="list-style-type: none"> <li>• Economical solution</li> <li>• Resistant to mould and algae growth</li> <li>• No spreading fire class</li> </ul>	<ul style="list-style-type: none"> <li>• High class impact resistance and extremely durable due to the unique fibre combination</li> <li>• Elastic and crack-bridging</li> <li>• Resistant to mould and algae growth</li> <li>• No spreading fire class</li> </ul>	<ul style="list-style-type: none"> <li>• Fast in application</li> <li>• Elastic and crack-bridging</li> <li>• Extremely durable</li> <li>• Resistant to mould and algae growth</li> <li>• No spreading fire class</li> </ul>	<ul style="list-style-type: none"> <li>• Very fast application</li> <li>• Highly durable</li> <li>• Innovative and high-quality solution</li> <li>• Improved insulation properties</li> <li>• Elastic and crack-bridging</li> <li>• Resistant to mould and algae growth</li> <li>• No spreading fire class</li> </ul>	<ul style="list-style-type: none"> <li>• Extremely durable</li> <li>• Elastic and crack-bridging</li> <li>• Improved acoustic properties</li> <li>• Very high vapour permeability</li> <li>• Resistant to mould and algae growth</li> <li>• Non-flammable</li> </ul>	<ul style="list-style-type: none"> <li>• Fast in application</li> <li>• Extremely durable</li> <li>• Elastic and crack-bridging</li> <li>• Improved acoustic properties</li> <li>• Very high vapour permeability</li> <li>• Resistant to mould and algae growth</li> <li>• Non-flammable</li> </ul>
Fixing	Adhesive mortar	ZS	CT 83	CT 83	CT 84	CT 180	CT 190
	Insulation material	styrofoam boards	styrofoam boards	styrofoam boards	styrofoam boards	mineral wool	mineral wool
Reinforced layer	Glass fibre mesh	mesh	mesh	mesh	mesh	mesh	mesh
	Adhesive and Reinforcement mortar	ZU	CT 85	CT 87	CT 87	CT 190	CT 87
	Priming paint	CT 15, CT 16	CT 15, CT 16	not needed	not needed	CT 15, CT 16	not needed
Plasters	mineral	CT 35, CT 137	CT 35, CT 137	CT 35, CT 137	CT 35, CT 137	CT 35, CT 137	CT 35, CT 137
	acrylic	CT 60, CT 63, CT 64	CT 60, CT 63, CT 64	CT 60, CT 63, CT 64	CT 60, CT 63, CT 64	–	–
	silicone-silicate	CT 174, CT 175	CT 174, CT 175	CT 174, CT 175	CT 174, CT 175	CT 174, CT 175	CT 174, CT 175
	silicate	CT 72, CT 73	CT 72, CT 73	CT 72, CT 73	CT 72, CT 73	CT 72, CT 73	CT 72, CT 73
	silicone	CT 74, CT 75	CT 74, CT 75	CT 74, CT 75	CT 74, CT 75	CT 74, CT 75	CT 74, CT 75
Facade paints	acrylic	CT 42, CT 44	CT 42, CT 44	CT 42, CT 44	CT 42, CT 44	–	–
	silicate	CT 54	CT 54	CT 54	CT 54	CT 54	CT 54
	silicone	CT 48	CT 48	CT 48	CT 48	CT 48	CT 48

## Facade plasters and paints with BioProtect formula – Durability and aesthetics for years

- **BioProtect** formula is an effective and long-lasting facade protection against biological contamination and the growth of fungi and algae.
- Thanks to the active substances closed in special microcapsules, the facade remains durable and retains its aesthetic appearance for many years. The release of active substances takes place gradually, in a controlled manner, ensuring a long-lasting effect.
- The effectiveness of **BioProtect** formula was confirmed by the appropriate permission of the Minister of Health. This also means that the active substances release process is completely safe for humans and the environment.



Unsecured plaster  
with biological contamination.



Dirty and unaesthetic facade.

Ceresit plaster  
with **BioProtect** formula.



Durable and aesthetic facade.

## Wide choice of plasters and paints

Plasters and paints, as a final part of ETICS system, are very important. They give additional properties of the system and also the possibility to create a stylish and nice looking facade thanks to our wide choice of colours and structures. See the qualities of Ceresit plasters and paints:

	Comparison of physical properties of Ceresit finishes	Vapour permeability	Water nonabsorbability	Dirt resistance	Resistance to microbiological contamination	Durability
PLASTERS	Mineral Plasters CT 34, CT 35, CT 137	+++++	+	+	+++++	+++
	Acrylic Plasters CT 60, CT 63, CT 64	++	+++	++	++++	+++
	Silicone-silicate Plasters CT 174, CT 175	+++	+++	+++	++++	++++
	Silicate Plasters CT 72, CT 73	+++++	++	++++	+++++	+++++
	Silicone Plasters CT 74, CT 75	++++	+++++	+++++	++++	+++++
PAINTS	Acrylic Paints CT 42, CT 44	++	+++	++	++++	+++
	Silicate Paint CT 54	++++	++	+++	+++++	++++
	Silicone Paint CT 48	+++	++++	++++	++++	++++
	Nanosilicone Paint CT 49 Silix XD®	+++++	+++++	+++++	++++	+++++



## Advantages of Ceresit CT 84 Express

- Water resistance
- Excellent insulation properties
- Superfast – lets work progress quickly
- Easy doing, convenient to use and extremely efficient
- High adhesion to mineral substrates & foam polystyrene
- Work in low temperatures and high humidity
- CFC free



**The winner is CT 84 Express!**  
For 100% more yield and convenience.














### Comparison of insulation time between two systems:

Traditional system with cement adhesive														
Day	1	2	3	4	5	6	7	8	9	10	11	12	13	14
Gluing panels	■	---												
Grinding panels				■										
Anchoring panels				■										
Armouring layer				■	---									
Priming							■	---						
Rendering								■	---					
Ceresit VWS Express System														
Day	1	2	3	4	5									
Gluing panels – CT 84 Express	■	---												
Grinding panels	■													
Anchoring panels	■													
Armouring layer – CT 87 „2w1“	■	---												
Priming			■	---										
Rendering			■	---										



**5 days  
faster!!!**

## Products specification

### Plasters

Plasters	Mineral	CT 34		"smooth" structure	<ul style="list-style-type: none"> <li>• highly vapour permeable (breathing)</li> <li>• highly durable and weather resistant</li> <li>• naturally resistant to bio-contamination (e.g. mould or moss)</li> <li>• hydrophobic</li> <li>• available in white and in versions for painting /for final colour use Ceresit paints: CT 48, CT 49 Silix XD®, CT 54/</li> </ul>
		CT 35		"rustic" structure grain 2.5 mm grain 3.5 mm	
		CT 137		"stone" structure grain 1.5 mm grain 2.0 mm grain 2.5 mm	
	Acrylic	CT 60		"stone" structure grain 1.5 mm grain 2.0 mm grain 2.5 mm	<ul style="list-style-type: none"> <li>• weather resistant</li> <li>• resistant to exploitation damages</li> <li>• low absorption and high flexibility</li> <li>• vapour permeable</li> <li>• BioProtect formula - resistant to mould, fungi and algae</li> <li>• colour stability</li> <li>• available in the full colour range of Ceresit Colours of Nature®</li> </ul>
		CT 63		"rustic" structure grain 3.0 mm	
		CT 64		"rustic" structure grain 2.0 mm	
	Silicate-Silicone	CT 174		"stone" structure grain 1.5 mm grain 2.0 mm	<ul style="list-style-type: none"> <li>• vapour permeable (breathing)</li> <li>• low absorption</li> <li>• resistant to exploitation damages</li> <li>• highly weather resistant</li> <li>• BioProtect formula - resistant to mould, fungi and algae</li> <li>• colour stability</li> <li>• available in the full colour range of Ceresit Colours of Nature®</li> </ul>
		CT 175		"rustic" structure grain 2.0 mm	
	Silicate	CT 72		"stone" structure grain 1.5 mm grain 2.5 mm	<ul style="list-style-type: none"> <li>• highly vapour permeable (breathing)</li> <li>• highly durable - resistant to exploitation damages and cleaning</li> <li>• highly weather resistant</li> <li>• BioProtect formula - highly resistant to mould, fungi and algae</li> <li>• colour stability</li> <li>• available in the full colour range of Ceresit Colours of Nature®</li> </ul>
		CT 73		"rustic" structure grain 2.0 mm	
	Silicone	CT 74		"stone" structure grain 1.5 mm grain 2.5 mm	<ul style="list-style-type: none"> <li>• high durability with self-cleaning effect</li> <li>• high flexibility and impact resistance</li> <li>• high colour stability</li> <li>• very limited absorption and high vapour permeability</li> <li>• highly weather resistant</li> <li>• BioProtect formula - resistant to mould, fungi and algae</li> <li>• available in the full colour range of Ceresit Colours of Nature®</li> </ul>
		CT 75		"rustic" structure grain 2.0 mm	
	Mosaic	CT 77		grain 0.8 - 1.2 mm grain 1.4 - 2.0 mm	<ul style="list-style-type: none"> <li>• durable &amp; scrub resistant</li> <li>• weather resistant</li> <li>• easy to clean</li> <li>• available in many colour compositions</li> </ul>

### Priming paints


Priming paints	Silicate	CT 15		for silicate plasters	<ul style="list-style-type: none"> <li>• easier plaster application</li> <li>• improved adhesion to substrate</li> <li>• waterproof</li> <li>• ready to use</li> <li>• available in several colours</li> </ul>
	Acrylic	CT 16		for mineral, acrylic, silicone and silicone-silicate plasters	



## Paints

Paints	Acrylic	CT 42		<ul style="list-style-type: none"> <li>• low absorption • resistant to exploitation damages • weather resistant • BioProtect formula - resistant to mould, fungi and algae • available in the full colour range of Ceresit Colours of Nature®</li> </ul>
		CT 44		<ul style="list-style-type: none"> <li>• reduce carbonatization process of concrete • crack bridging • low absorption and high flexibility • resistant to exploitation damages • weather resistant • BioProtect formula - resistant to mould, fungi and algae • available in the full colour range of Ceresit Colours of Nature®</li> </ul>
	Silicate	CT 54		<ul style="list-style-type: none"> <li>• highly vapour permeable (breathing) • highly durable - resistant to exploitation damages and cleaning • weather resistant • BioProtect formula - highly resistant to mould, fungi and algae • available in the full colour range of Ceresit Colours of Nature®</li> </ul>
	Silicone	CT 48		<ul style="list-style-type: none"> <li>• low absorption • vapour permeable (breathing) • dirt resistance • durable • high UV and weather resistance • BioProtect formula - resistant to mould, fungi and algae</li> </ul>
	Nanosilicone	CT 49 Silix XD®		<ul style="list-style-type: none"> <li>• slight absorbance • excellent vapour permeability • self-cleaning (especially resistant to dirt) • high durability thanks to the Silix XD® formula • crack-bridging • highly resistant to UV and weather conditions • ticsotropic • for use in areas open for biological contamination (fungi, algae, etc.)</li> </ul>

## Adhesives

Adhesives	For foamed polystyrene systems	ZS		Adhesive mortar EPS	<ul style="list-style-type: none"> <li>• low price per m<sup>2</sup> • good adhesion • weatherproof</li> </ul>
		ZU		Adhesive and reinforcing mortar EPS	<ul style="list-style-type: none"> <li>• flexible • high-strength • good adhesion • weatherproof</li> </ul>
		CT 83		Adhesive mortar EPS	<ul style="list-style-type: none"> <li>• high-strength • very good adhesion • good workability • weatherproof</li> </ul>
		CT 84		Express PU-adhesive for polystyrene boards	<ul style="list-style-type: none"> <li>• very fast application • improved insulation properties • easy in application and handling • excellent adhesion • flexible</li> </ul>
		CT 85		Adhesive and reinforcing mortar EPS	<ul style="list-style-type: none"> <li>• high class impact resistance • unique fibre combination • elastic and crack-bridging • high strength • very good adhesion • weatherproof</li> </ul>
	For foamed polystyrene / wool systems	CT 87		Adhesive and reinforcing mortar EPS/wool "2 in 1"	<ul style="list-style-type: none"> <li>• no priming before rendering • lower consumption • fibre reinforced • excellent workability • scratch- and crackproof • white mortar • extremely durable • weatherproof • vapour permeable</li> </ul>
	For mineral wool systems	CT 180		Adhesive mortar for mineral wool	<ul style="list-style-type: none"> <li>• high-strength • very good adhesion • excellent workability parameters • vapour permeable • weatherproof</li> </ul>
		CT 190		Adhesive and reinforcing mortar for mineral wool	<ul style="list-style-type: none"> <li>• high-strength • fibre reinforced • scratch- and crackproof • very good adhesion • flexible • vapour permeable • weatherproof</li> </ul>



# Ceresit

**Kilsaran**  
INTERNATIONAL

**Ireland**

Kilsaran International  
Brownstown, Kilcullen, Co. Kildare, Ireland.  
**Tel:** +353 (0)45 480620 or Locall 1890 92 99 92 (ROI only)  
**Email:** [info@kilsaran.ie](mailto:info@kilsaran.ie)

**UK**

Kilsaran International  
Unit 16, Premier Park, Acheson Way, Trafford Park, Manchester M17 1GA.  
**Tel:** +44 (0)161 872 8899  
**Email:** [info@kilsaraninternational.co.uk](mailto:info@kilsaraninternational.co.uk)



**Quality for Professionals**